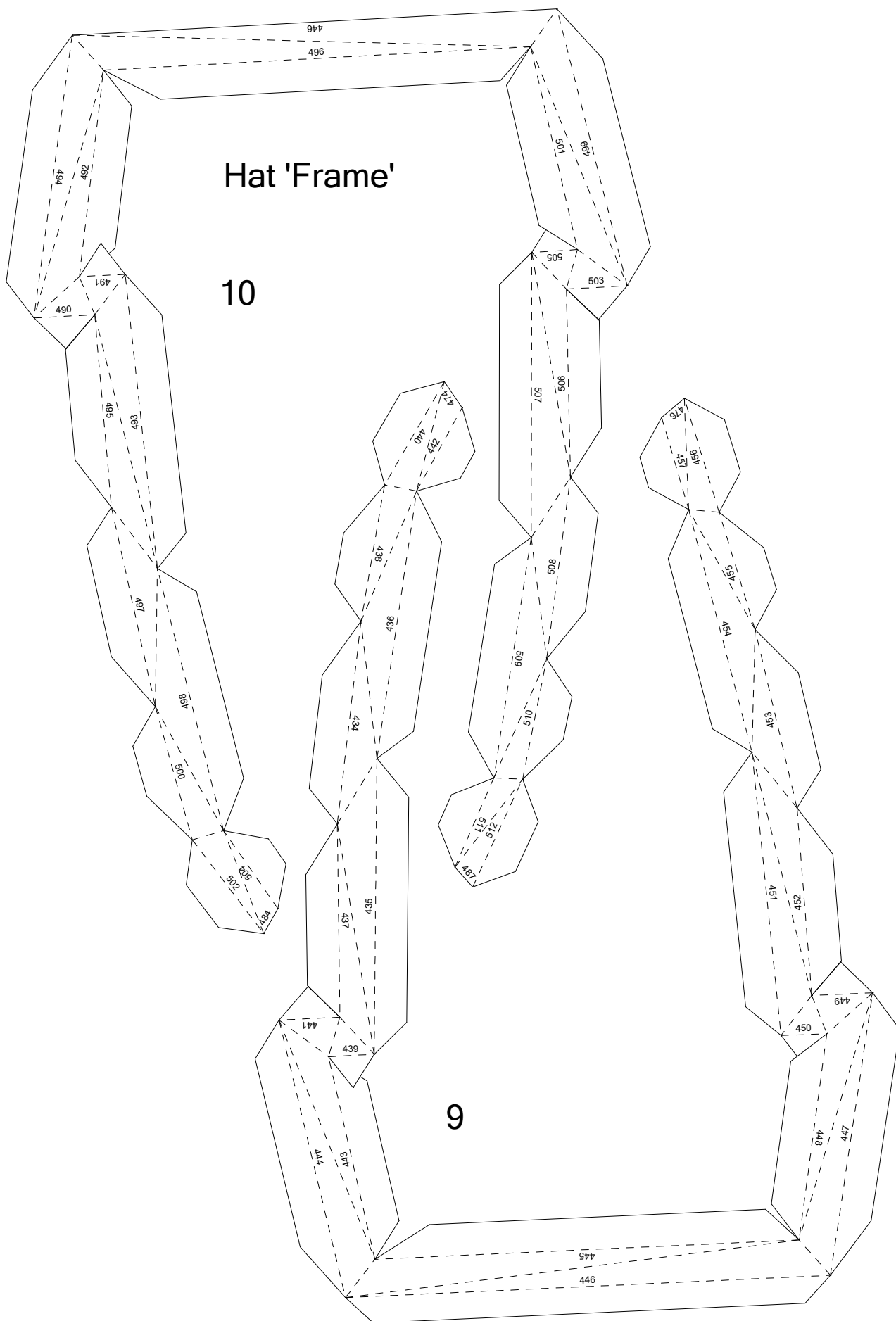




Tapu Bulu

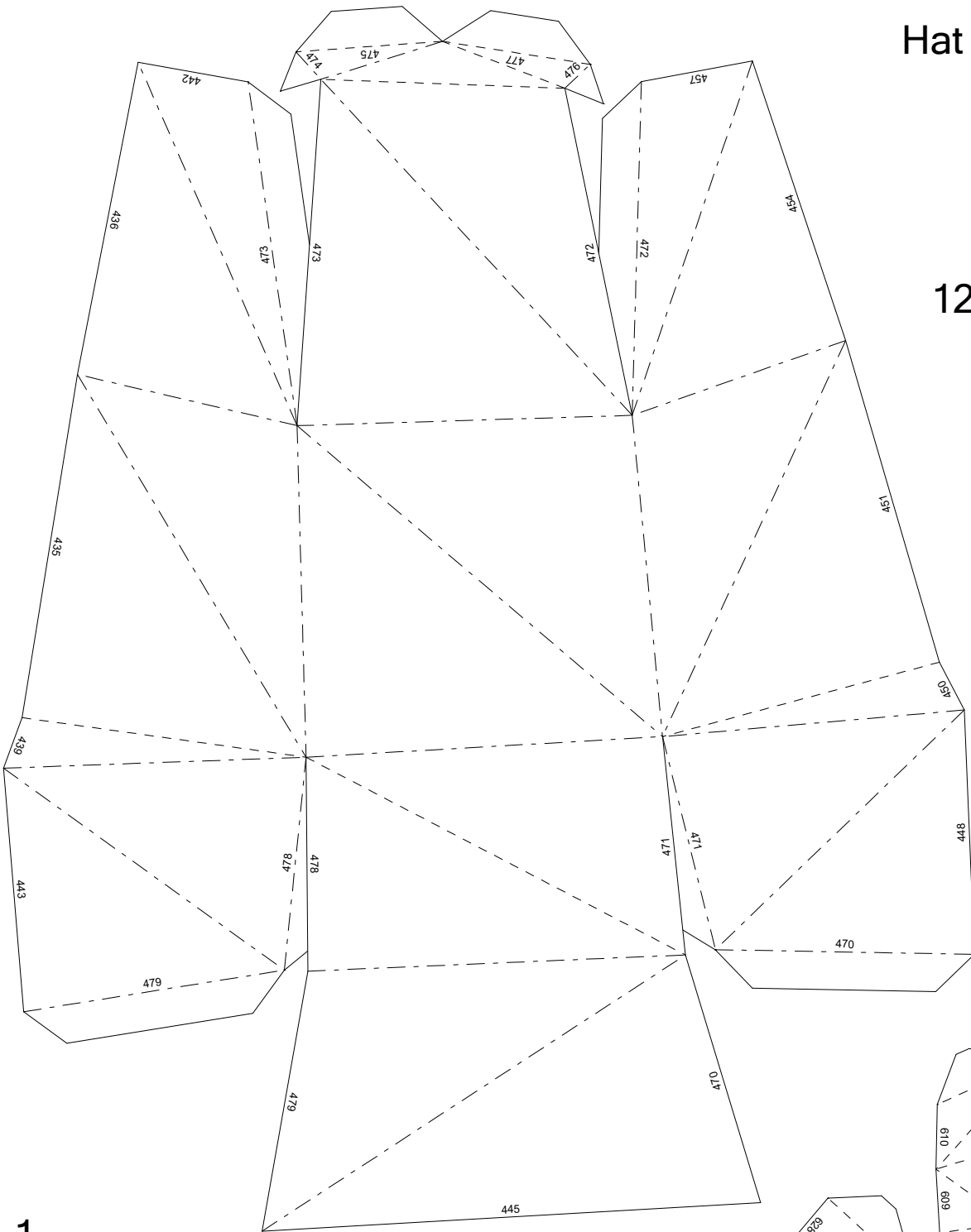
by Brandon

PaperPokes
www.pokemonpapercraft.net

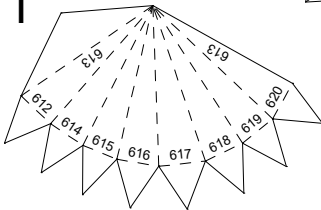


Hat Inner

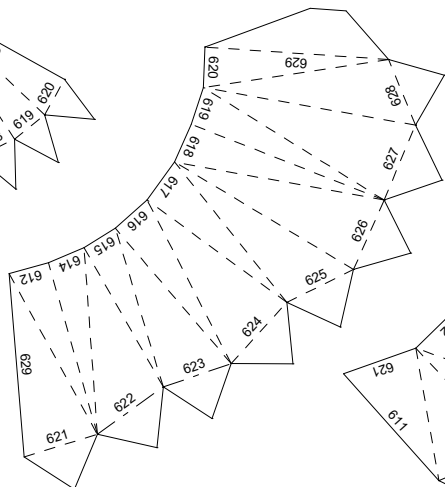
12



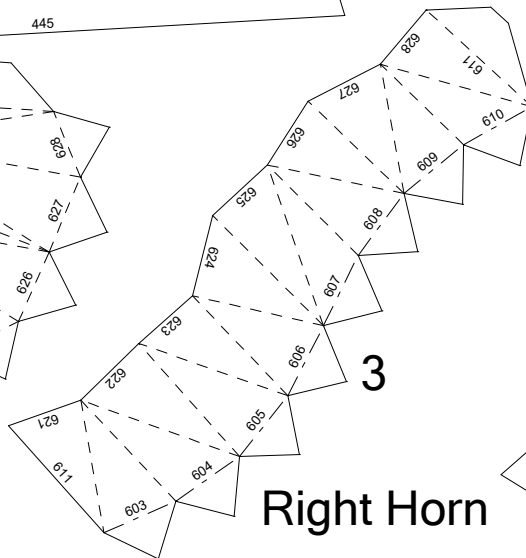
1



2

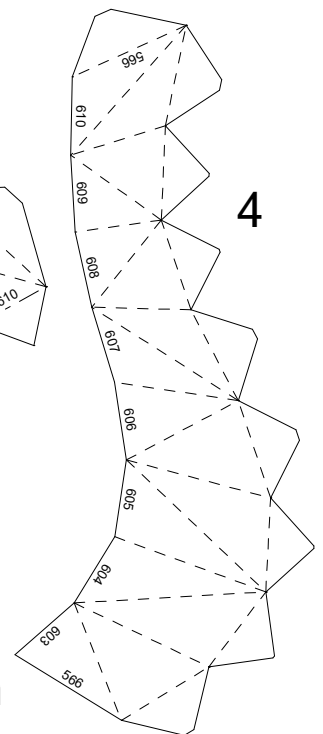


3



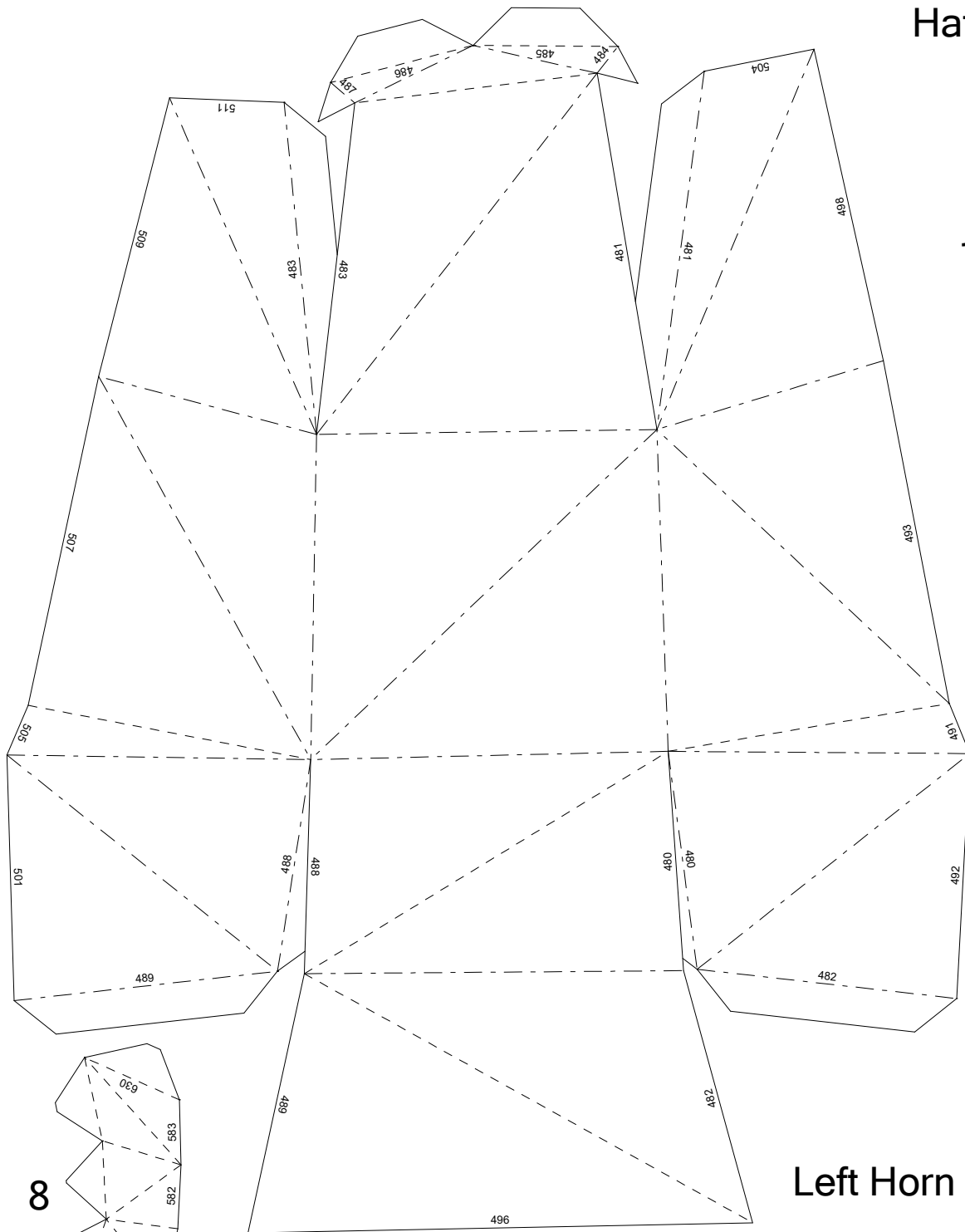
Right Horn

4

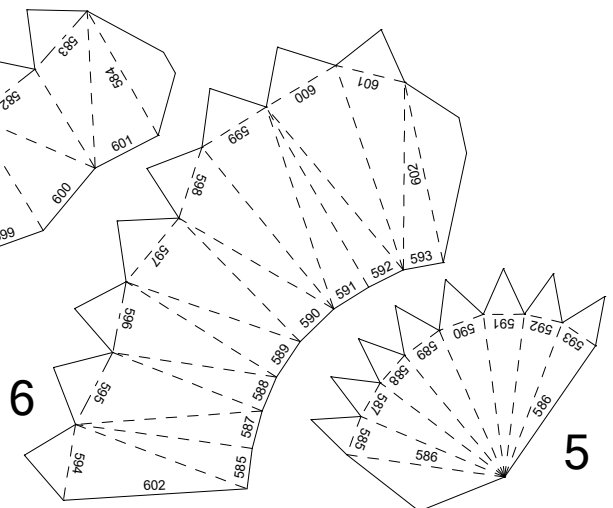
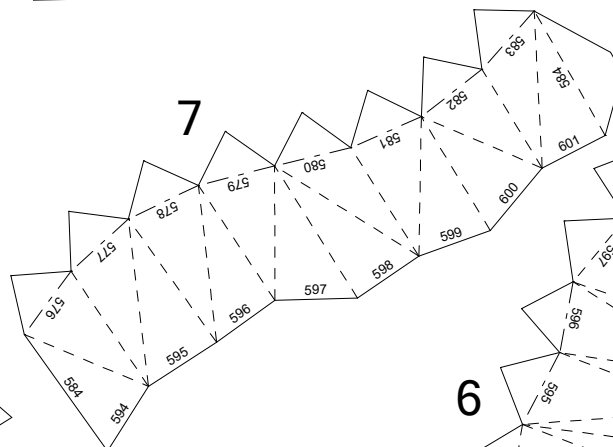
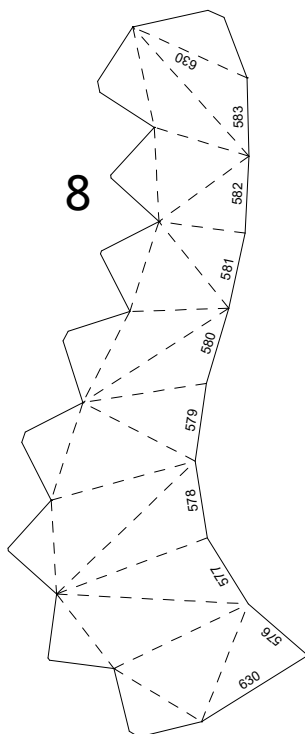


Hat Inner

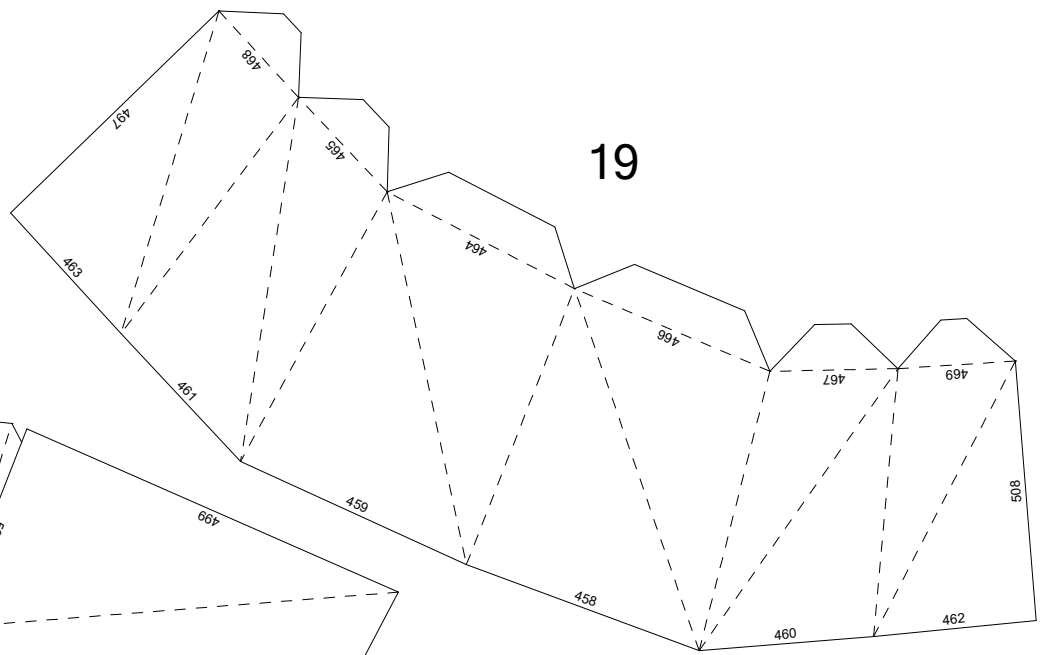
11



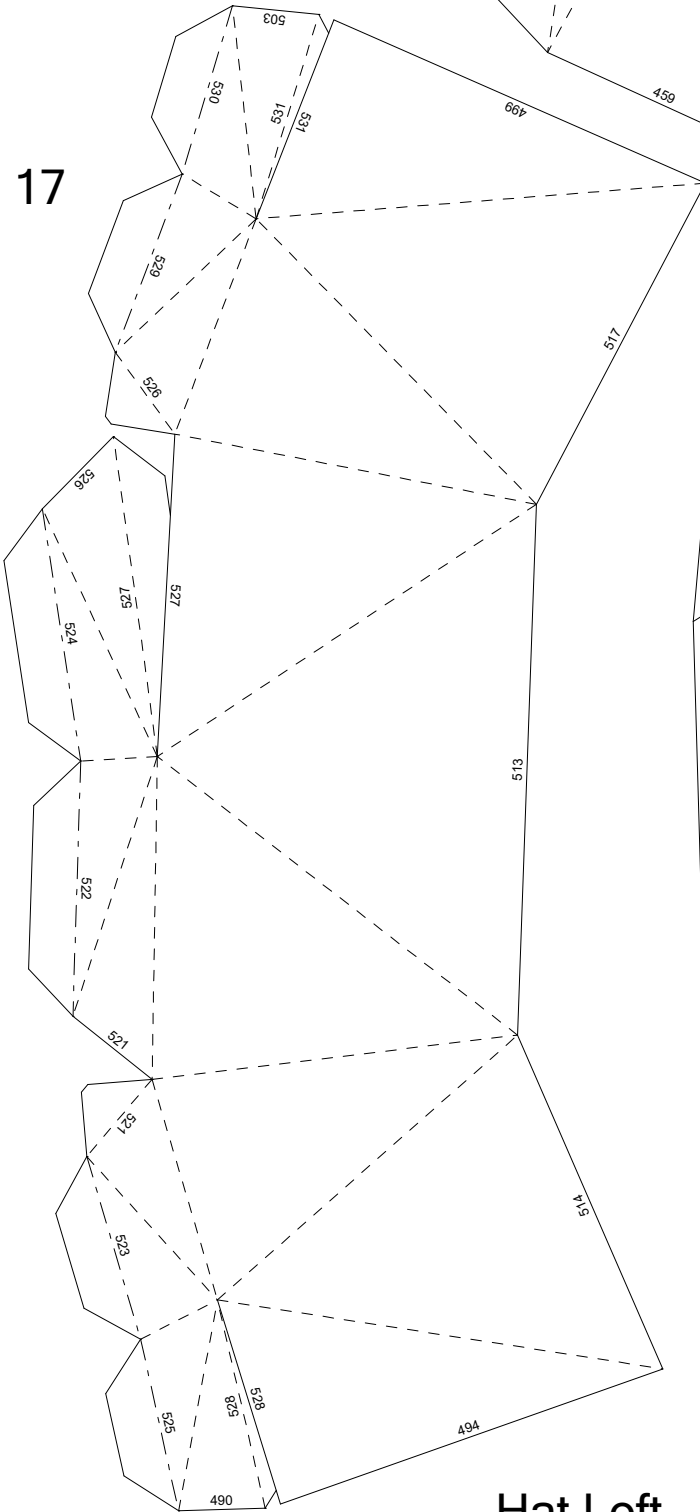
Left Horn



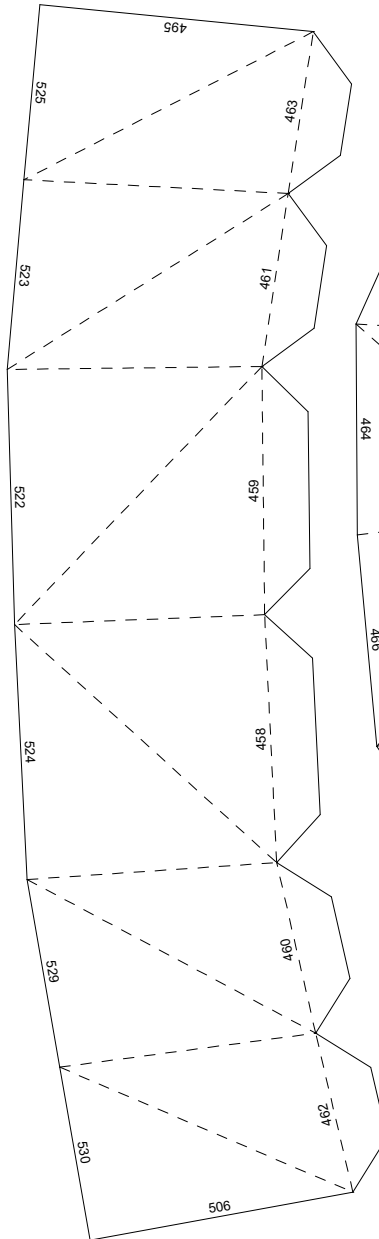
[illegible]



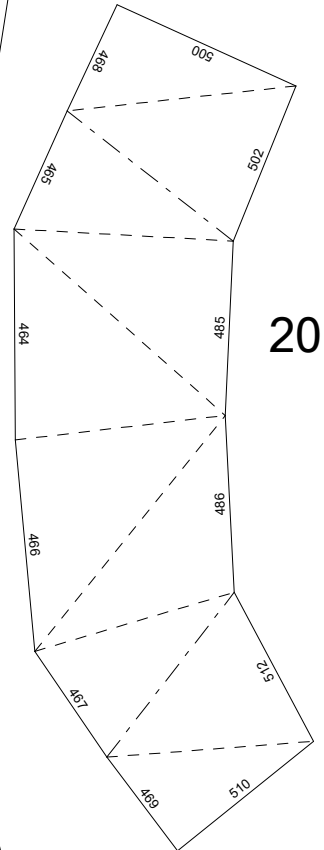
19



17



18

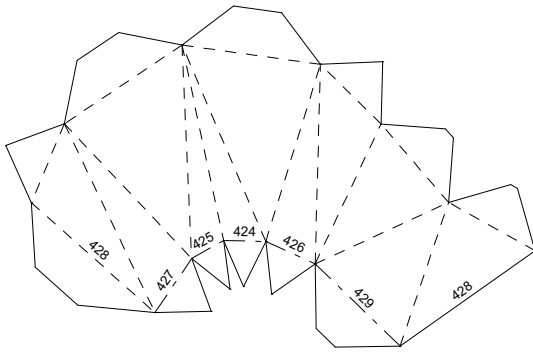


20

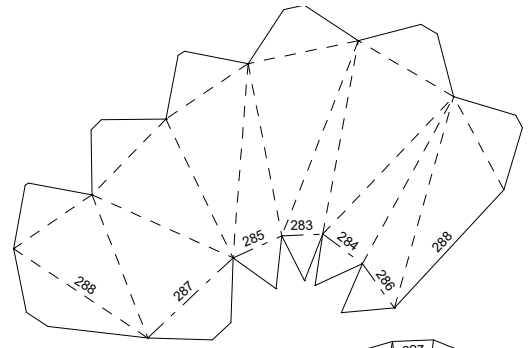
Hat Left

Head

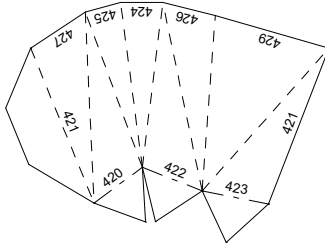
21



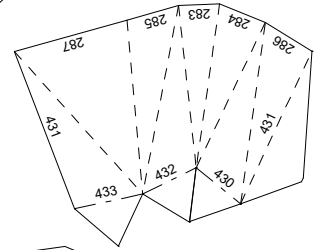
23



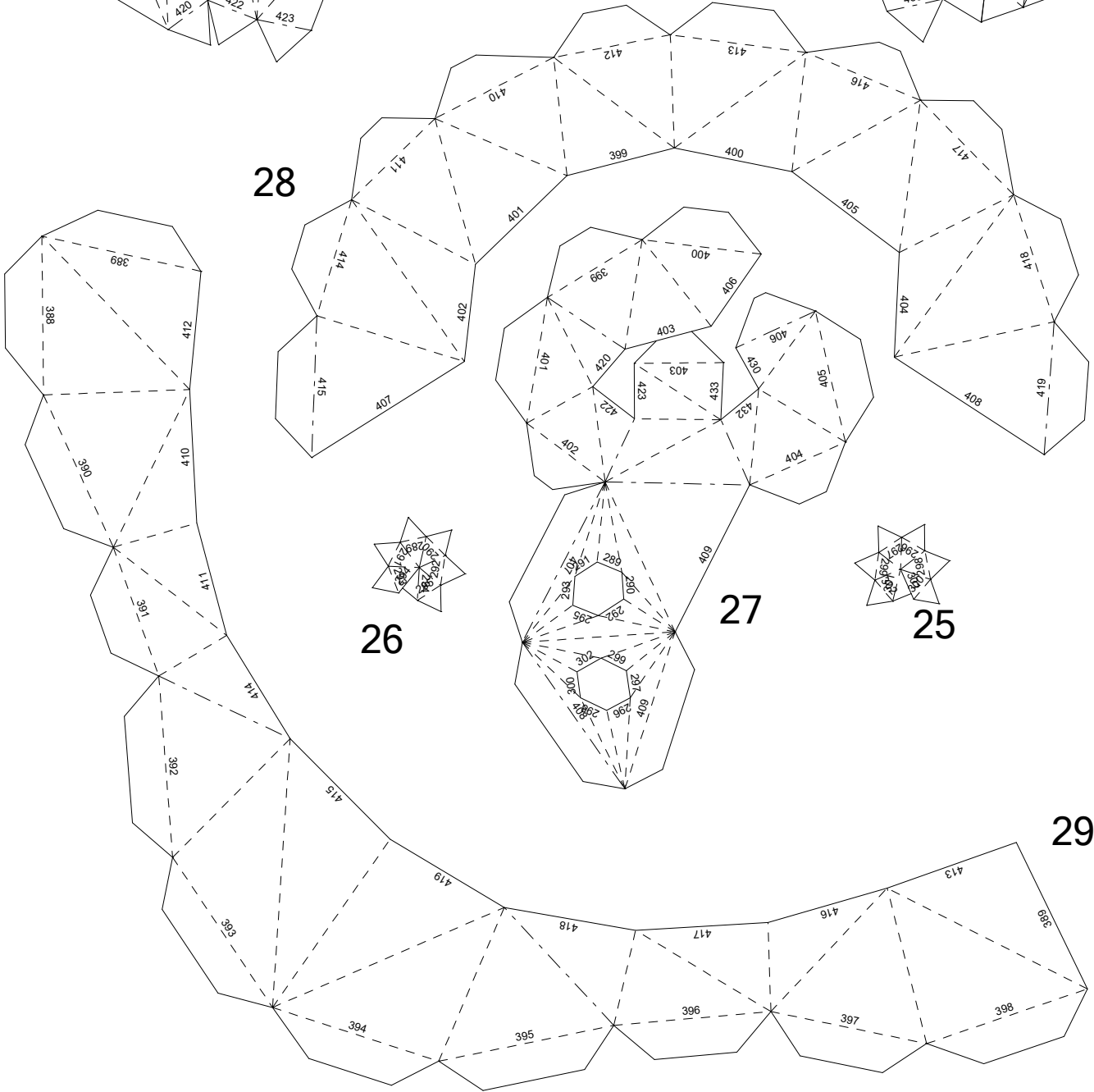
22



24



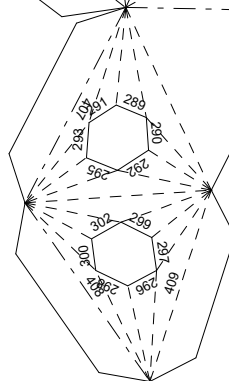
28



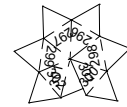
26



27



25

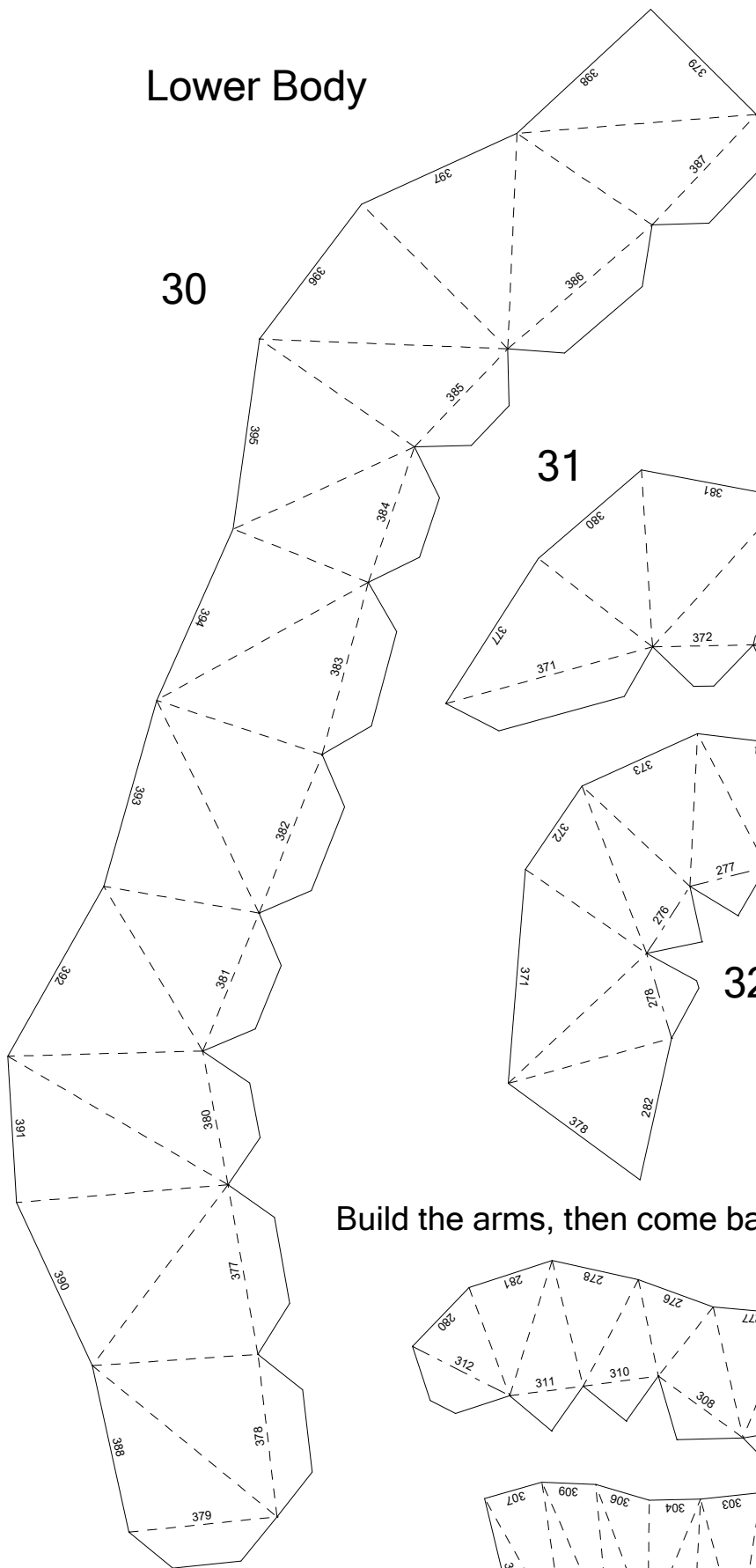


29

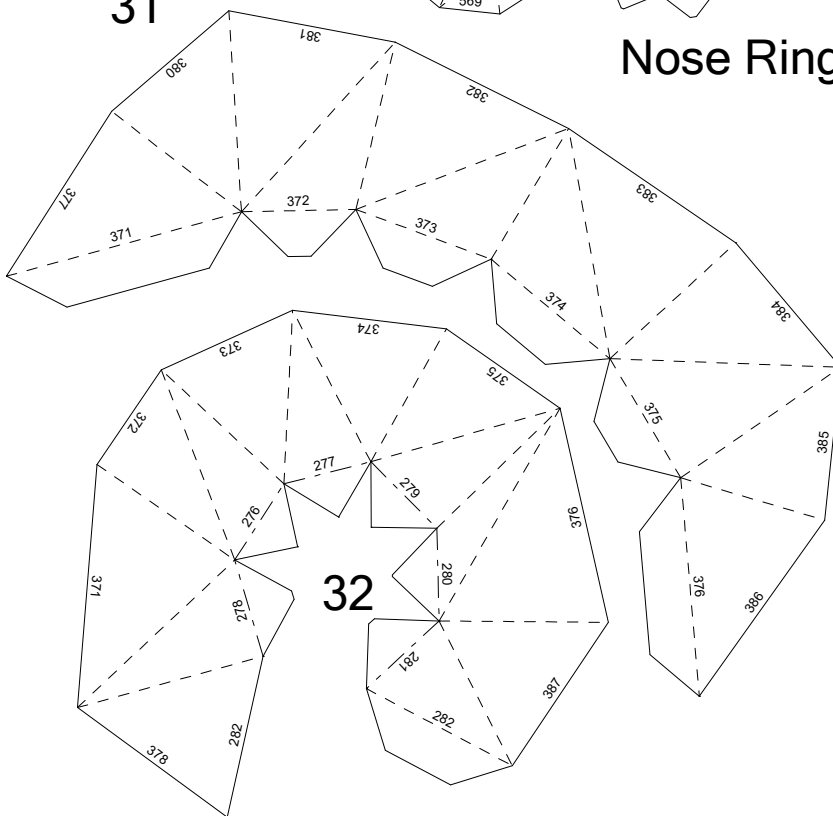
Upper Body

Lower Body

30

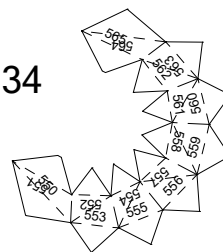


31



32

34

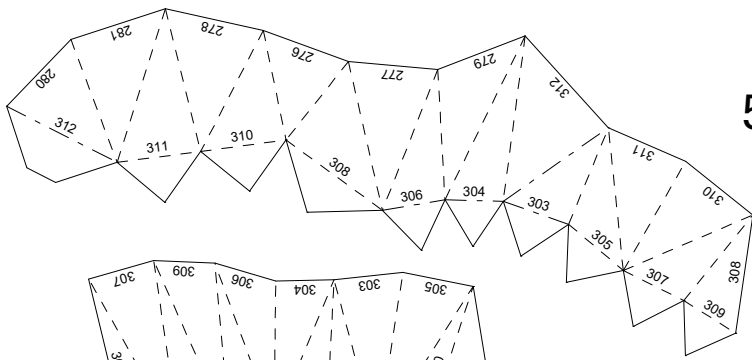


33

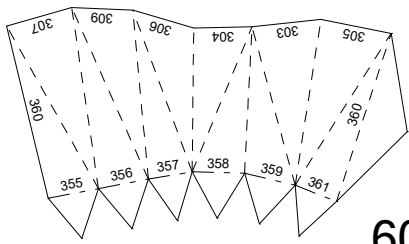
Nose Ring

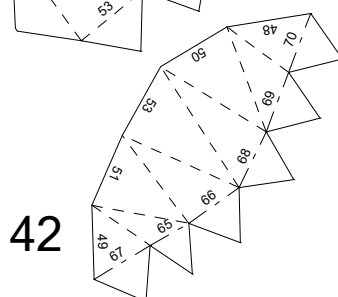
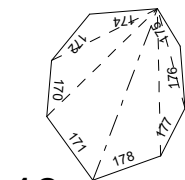
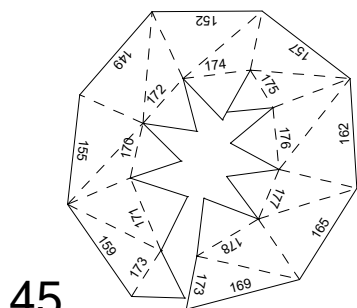
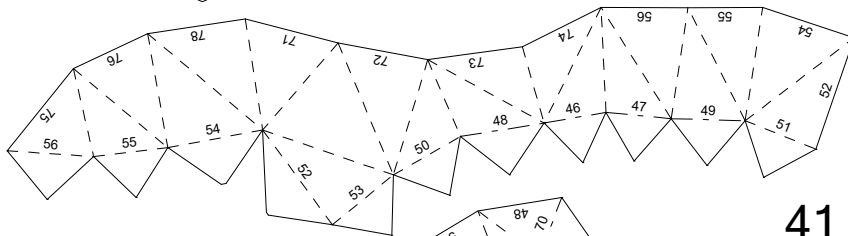
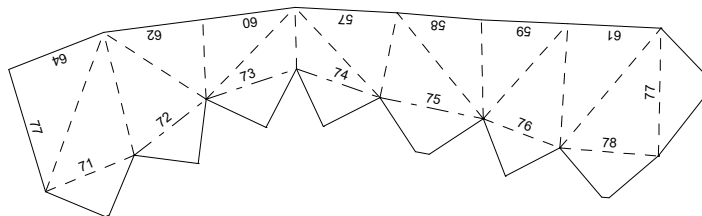
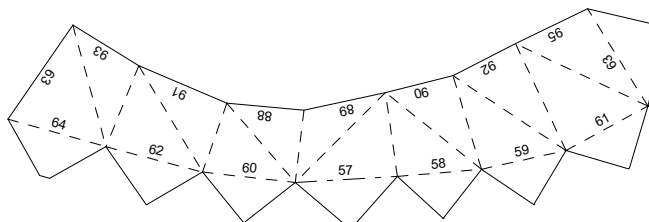
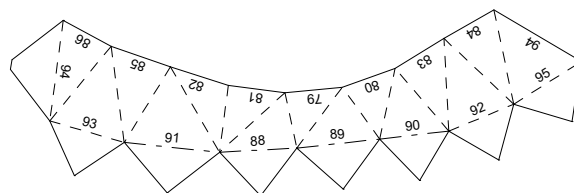
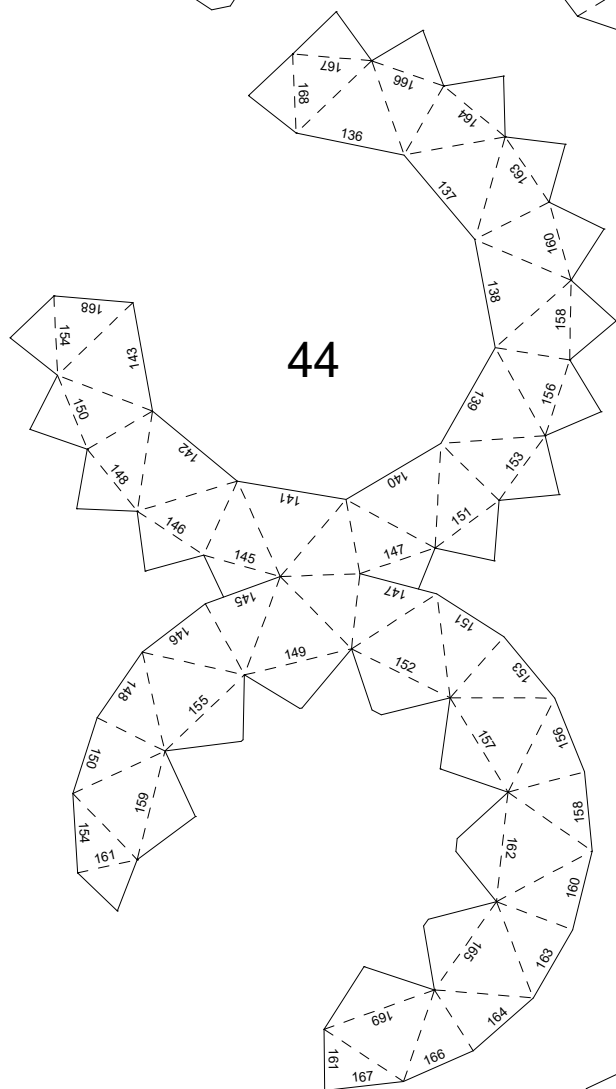
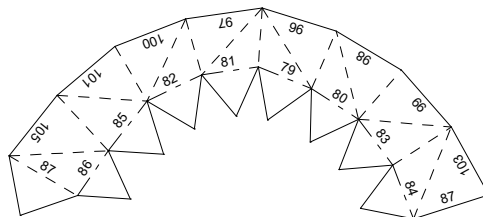
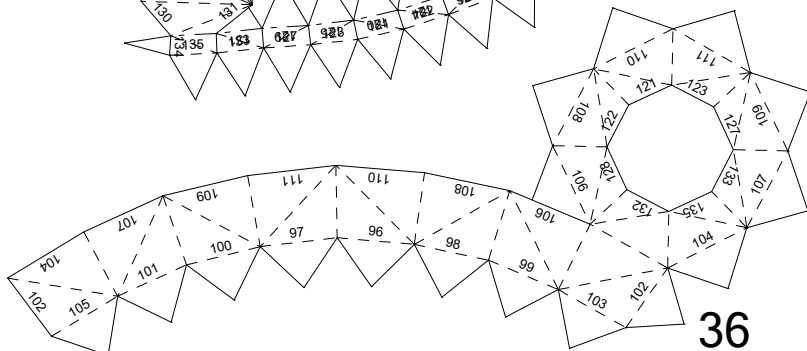
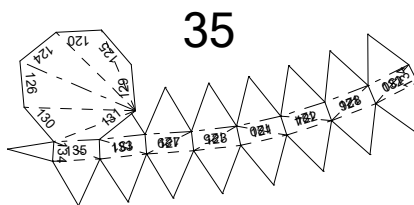
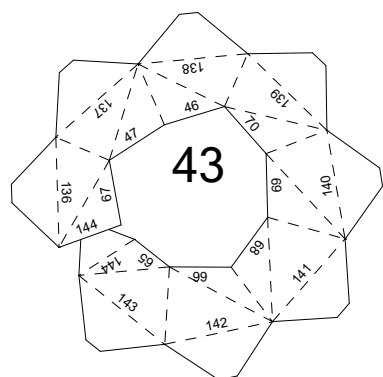
Build the arms, then come back (hence 34 to 58 gap)

59

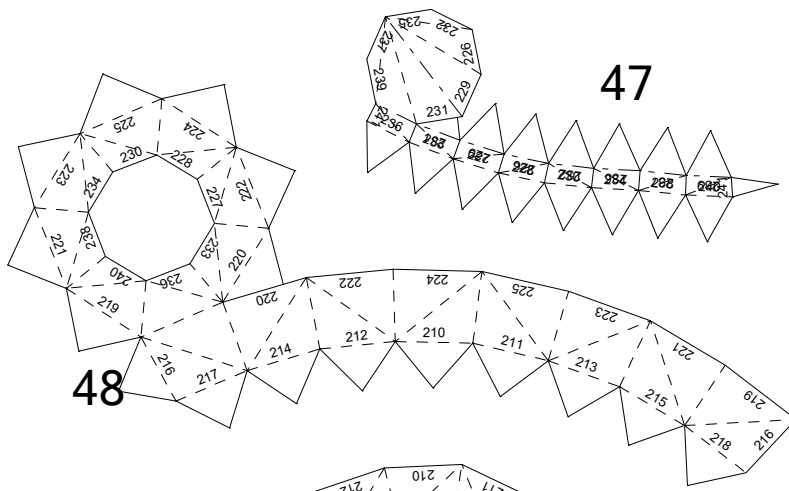


60

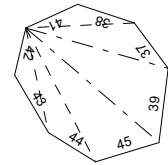




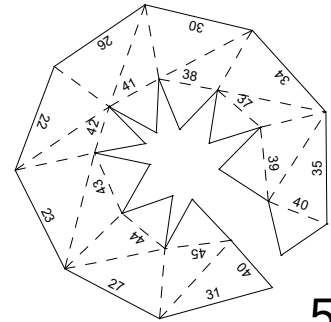
Right Arm



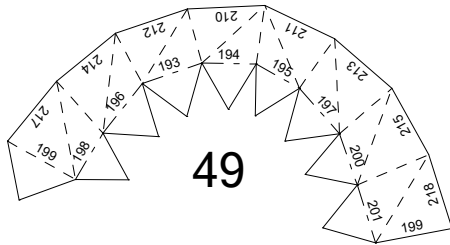
47



58

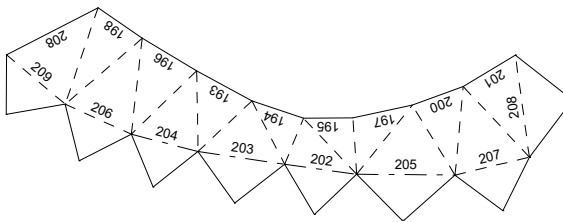


57

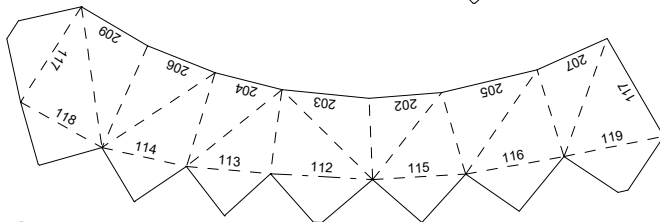


49

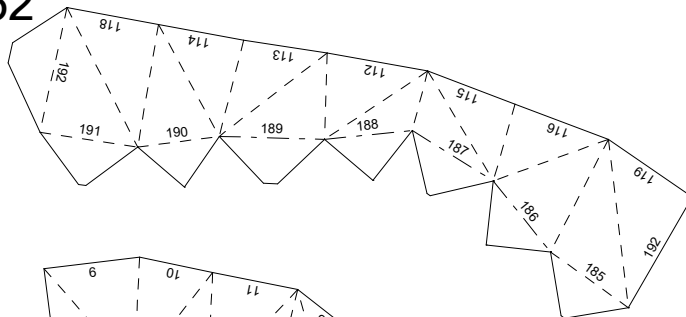
50



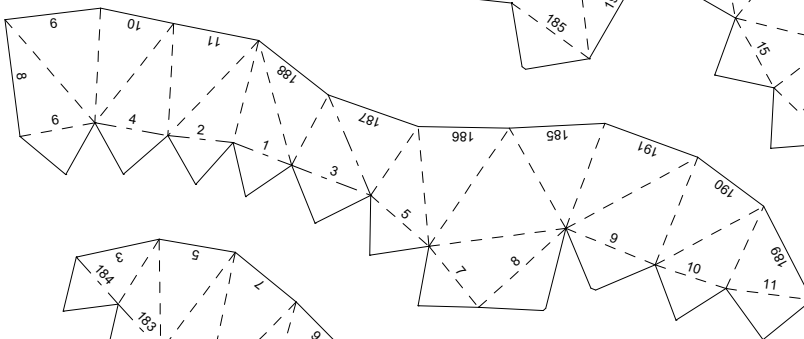
51



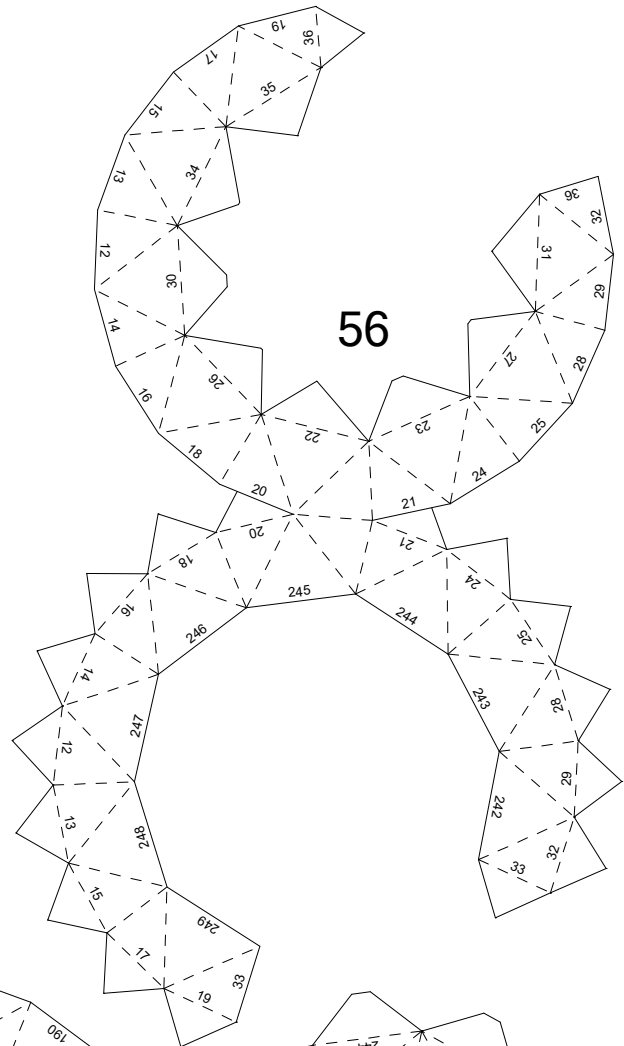
52



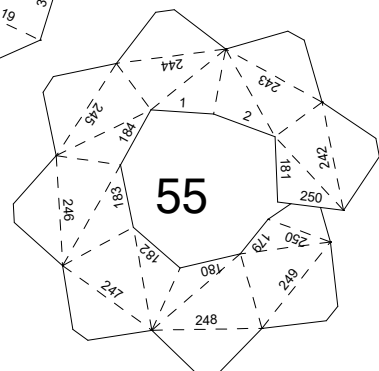
53



54

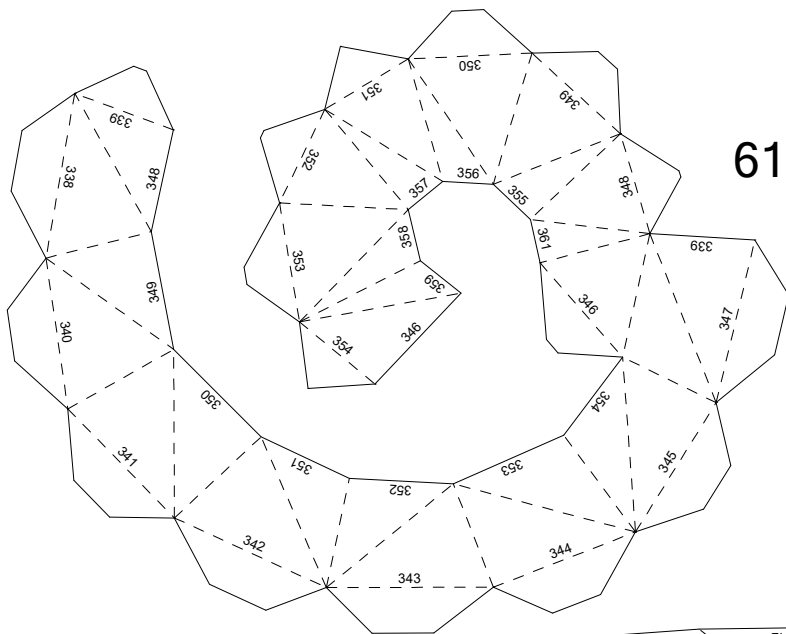


56

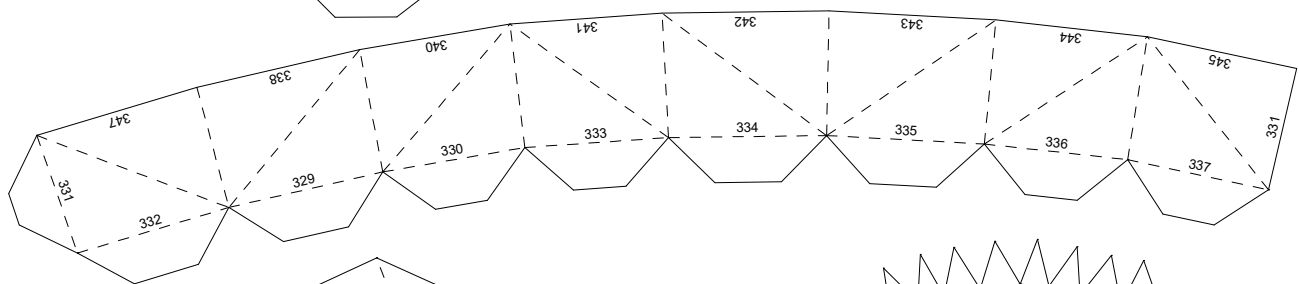


55

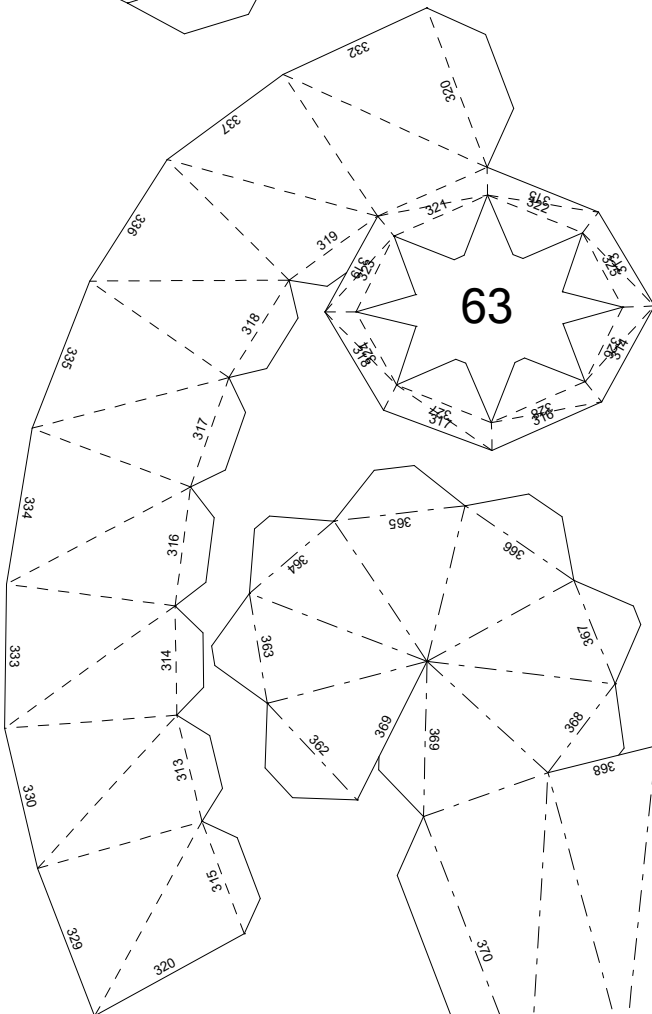
Left Arm



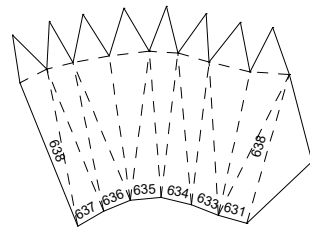
61



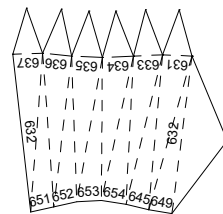
62



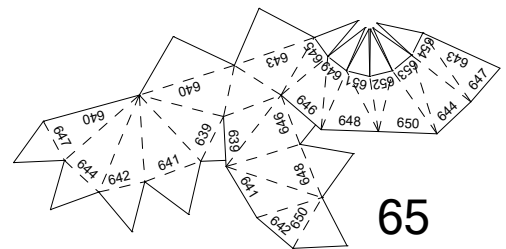
63



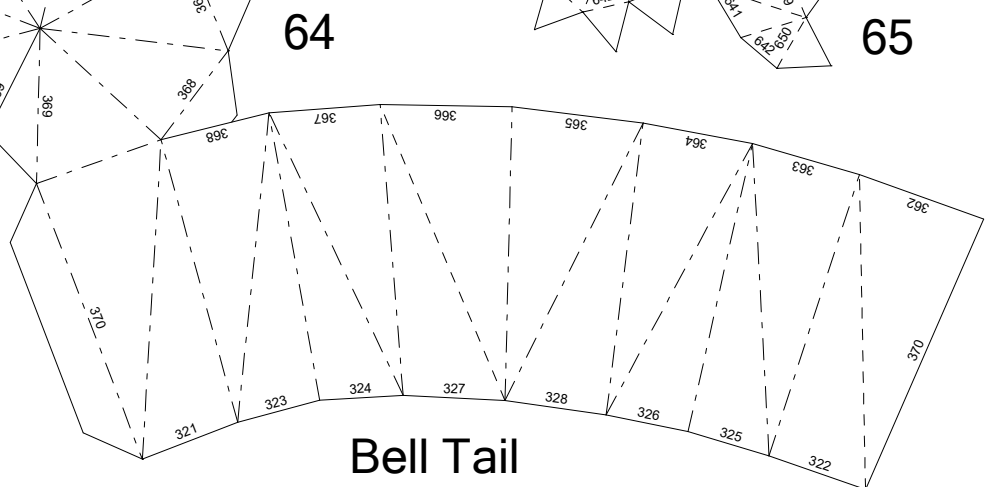
64



65



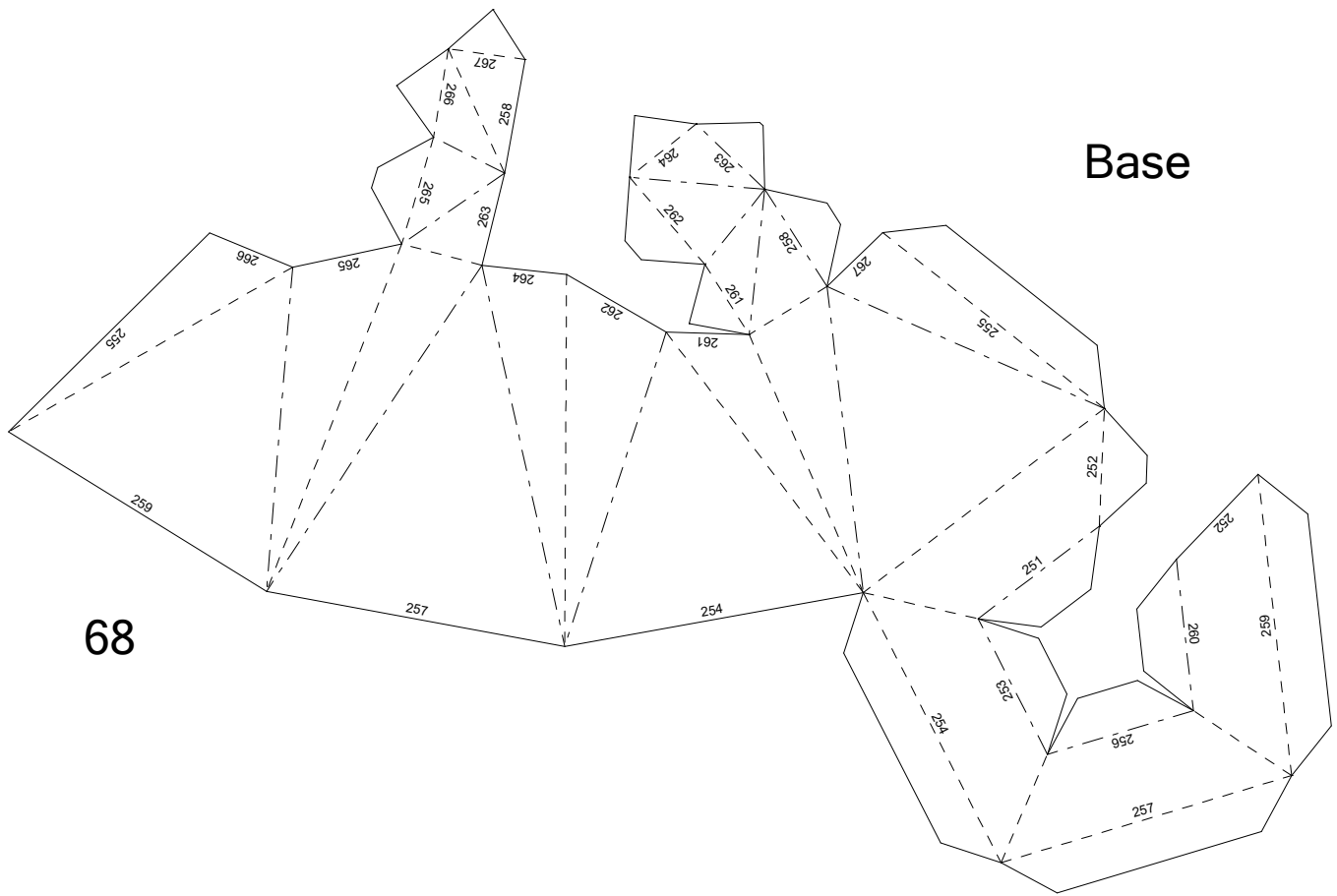
66



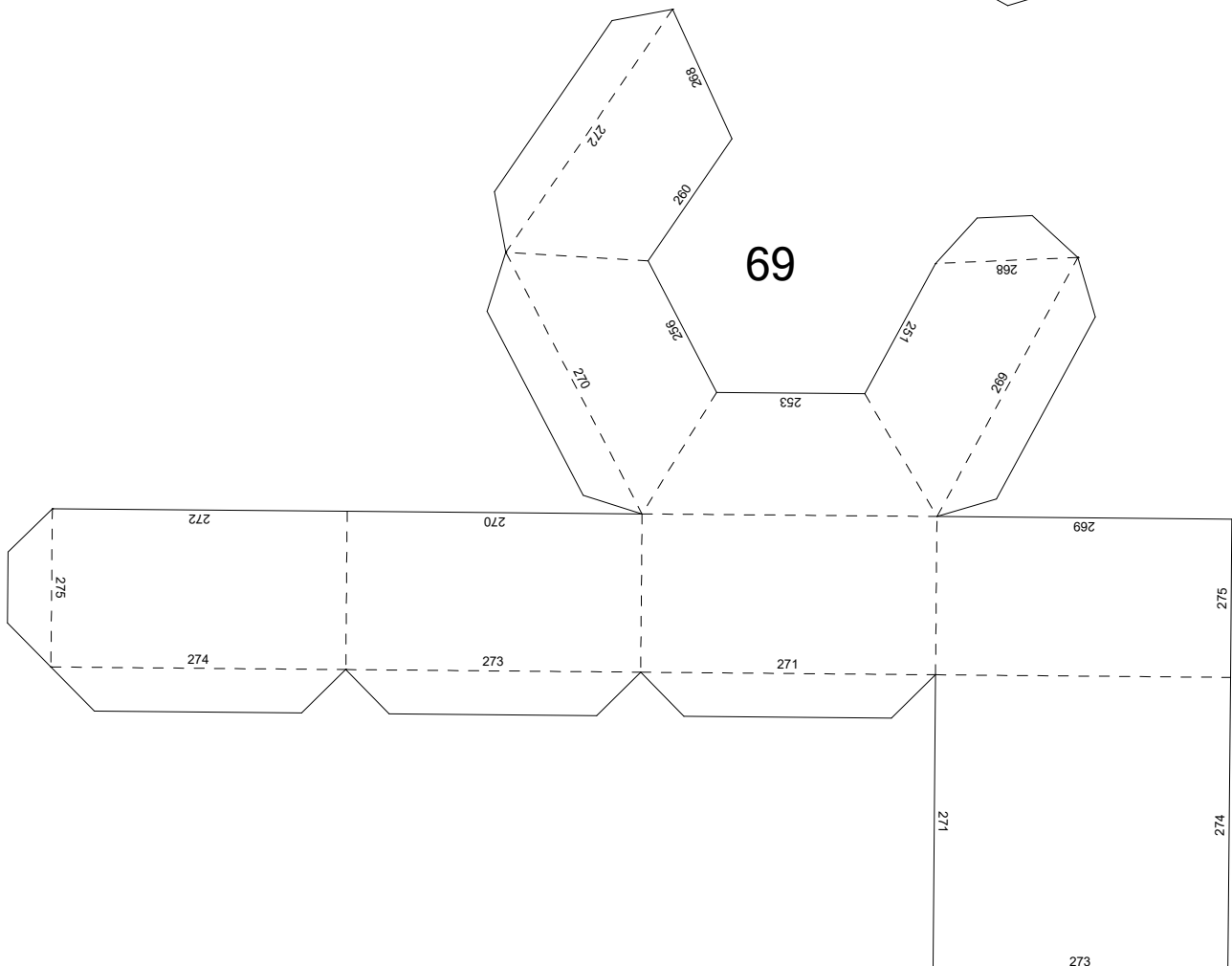
67

Bell Tail

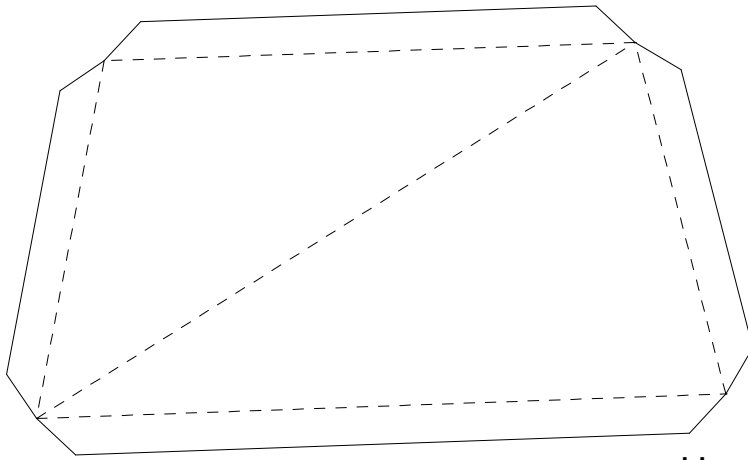
Base



68



69



Hat Left End Piece

(Unneeded unless you
want to build the hat standalone-
many arts show the Tapus enclosed
in shells made from their features)

Hat Right End Piece

