

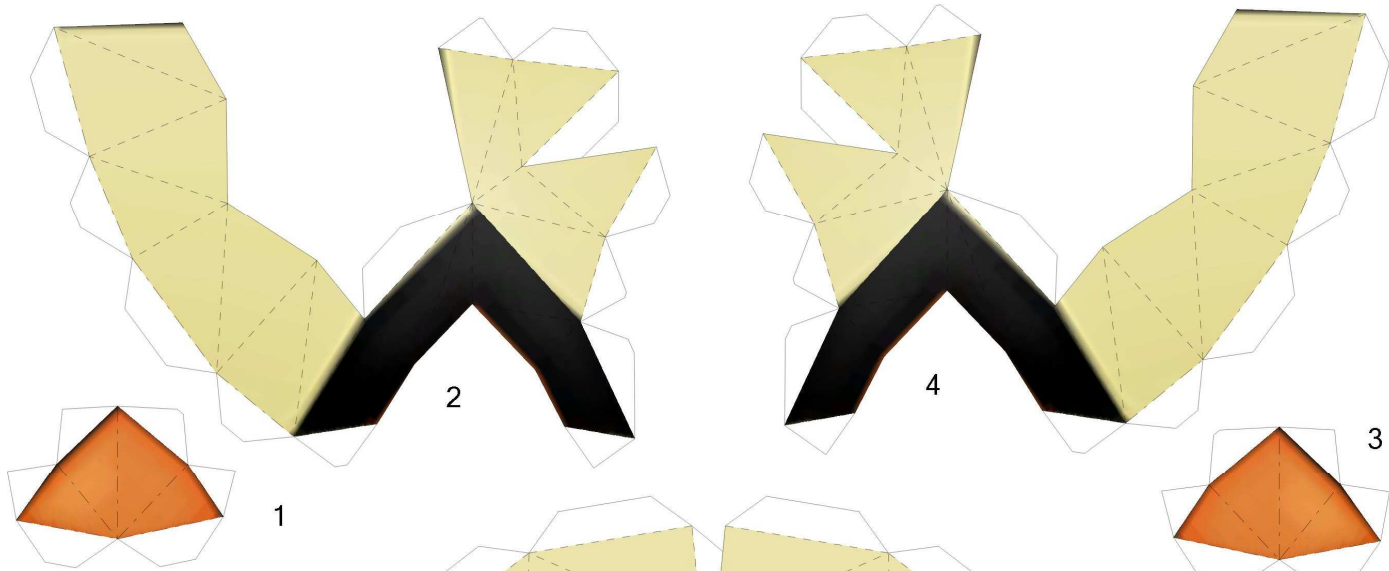


Meowth V2

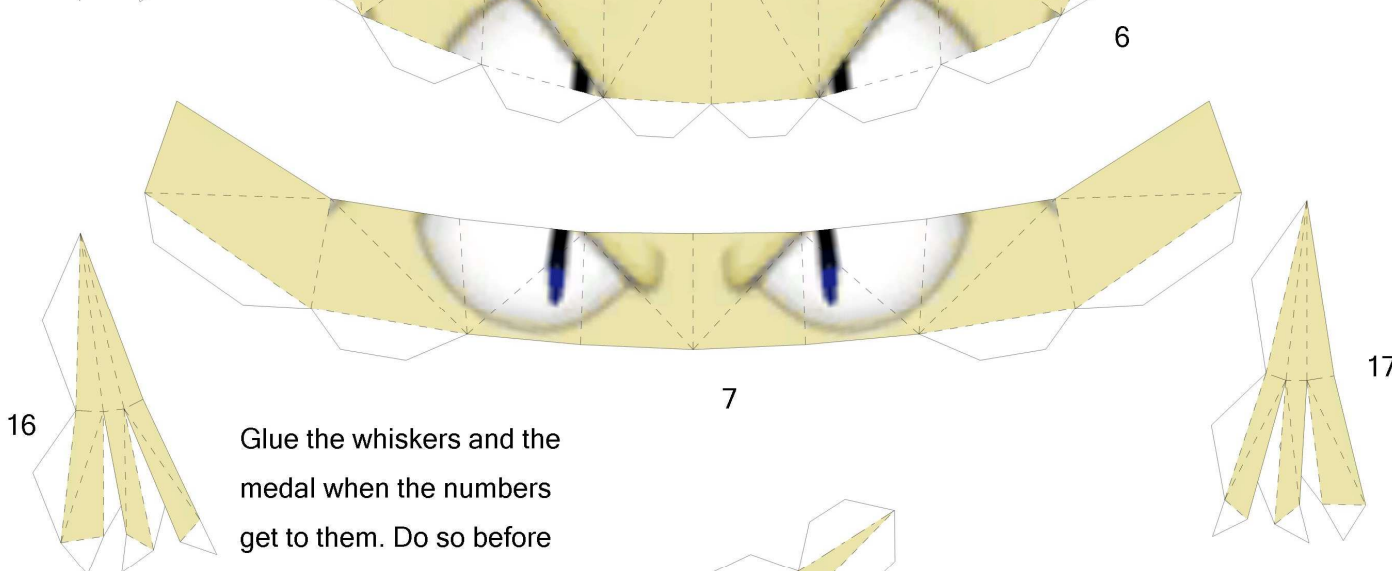
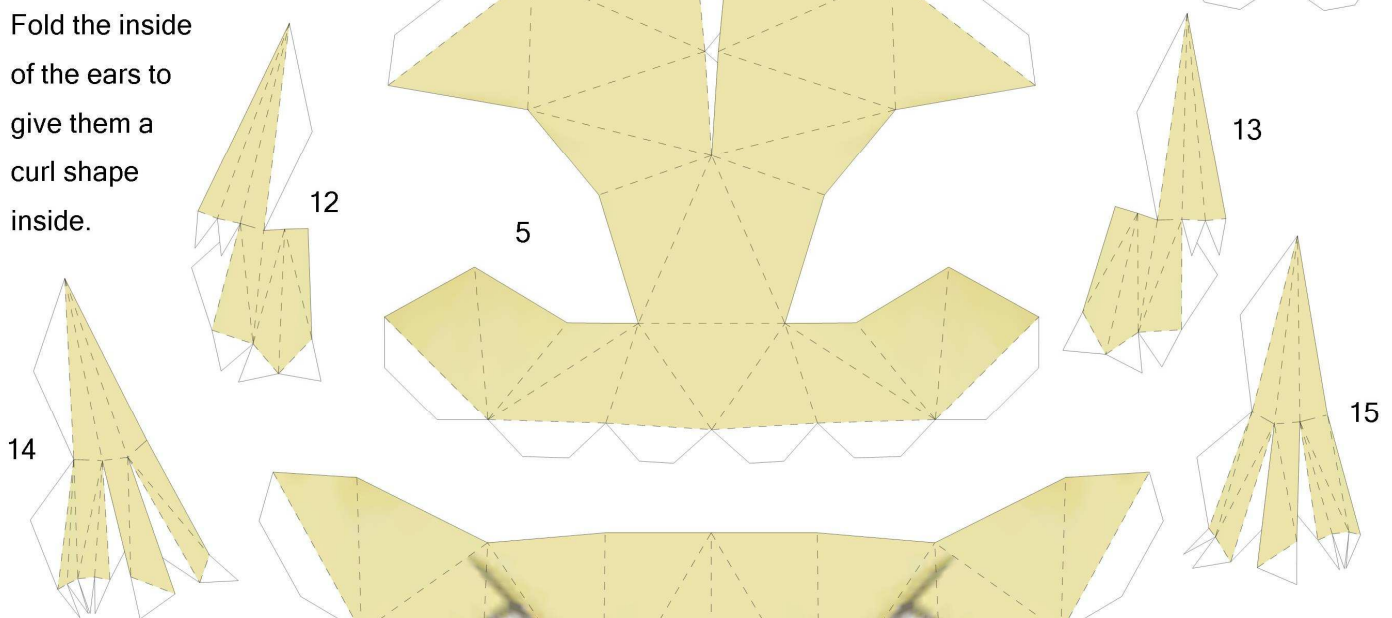
Edited by Paperpokés

Build by LuIS

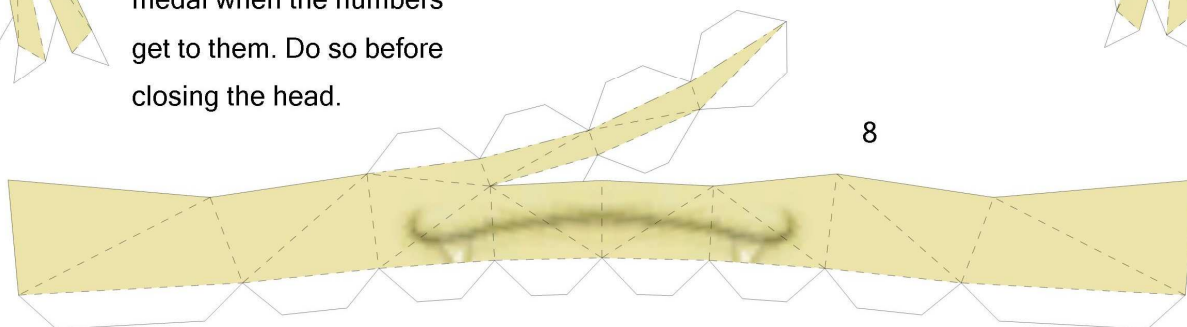
PaperPokés
www.pokemonpapercraft.net

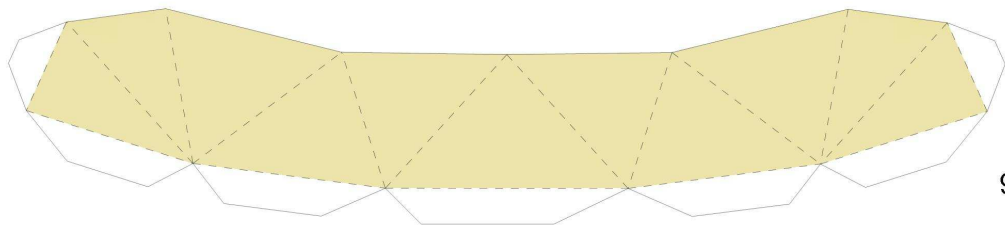


Fold the inside of the ears to give them a curl shape inside.

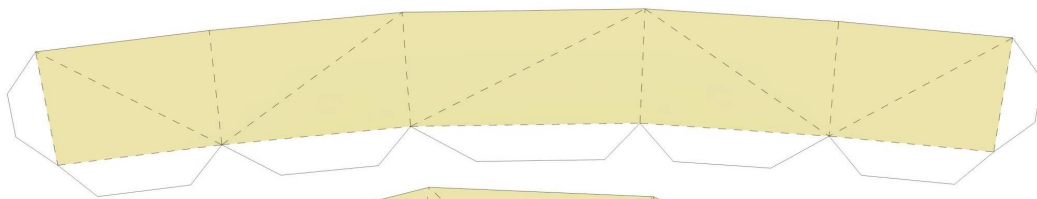


Glue the whiskers and the medal when the numbers get to them. Do so before closing the head.

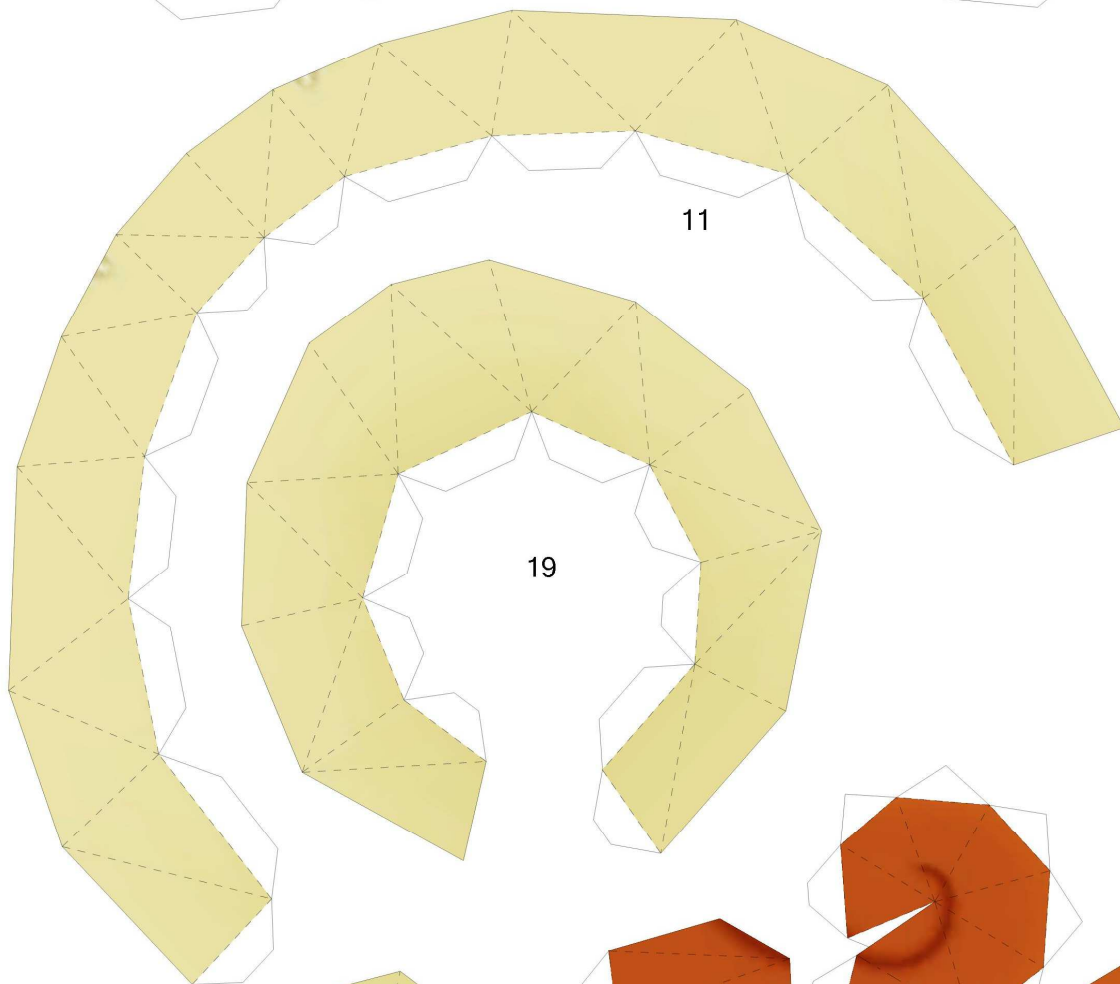




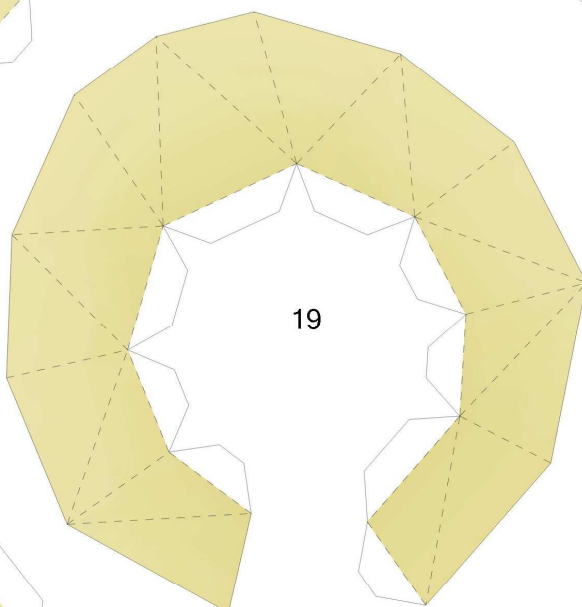
9



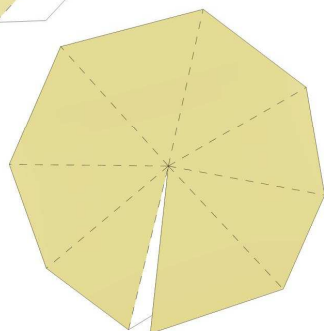
10



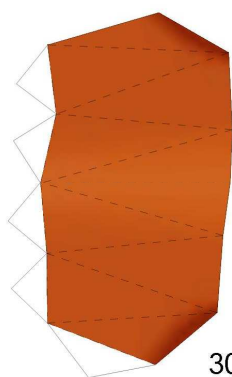
11



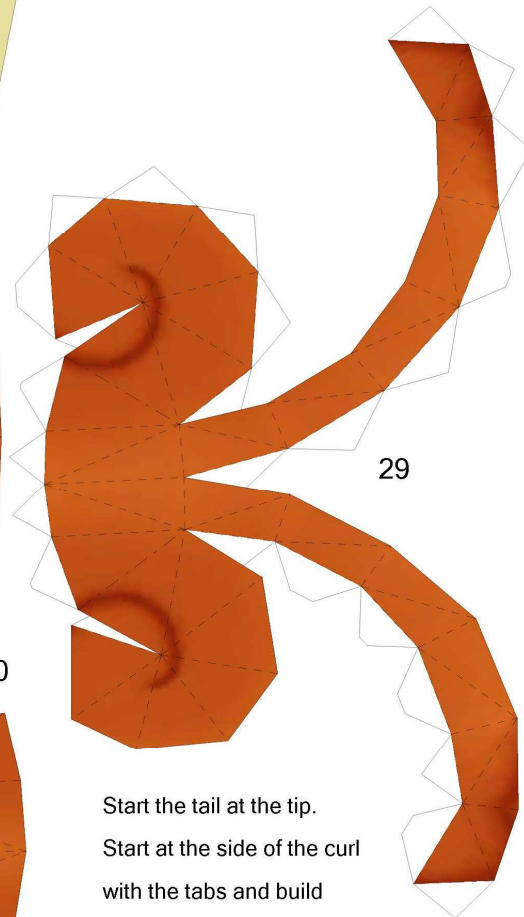
19



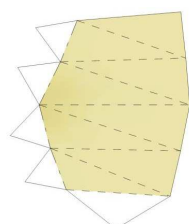
20



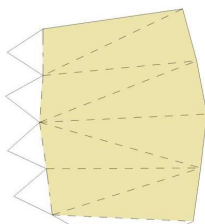
30



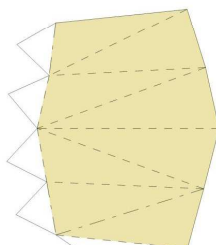
29



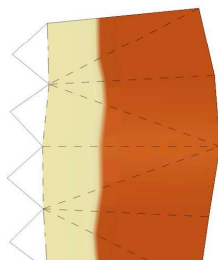
34



33



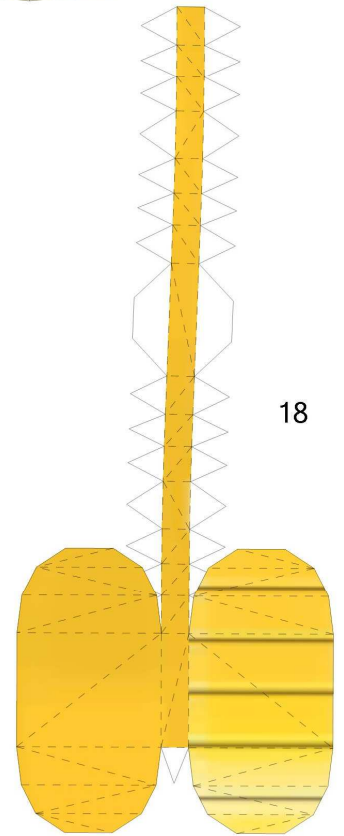
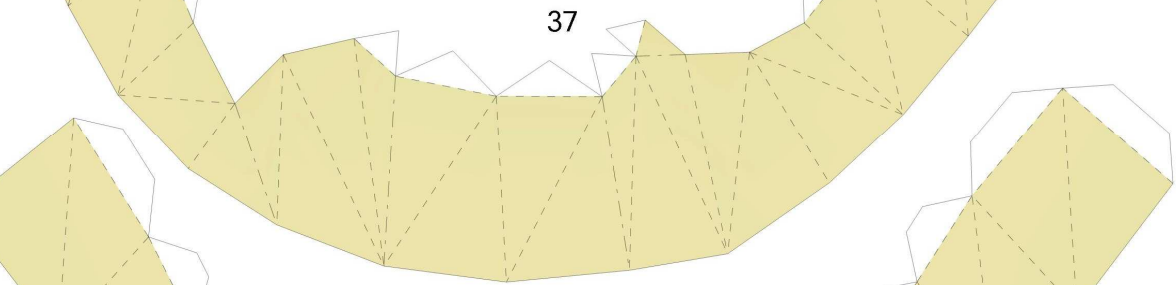
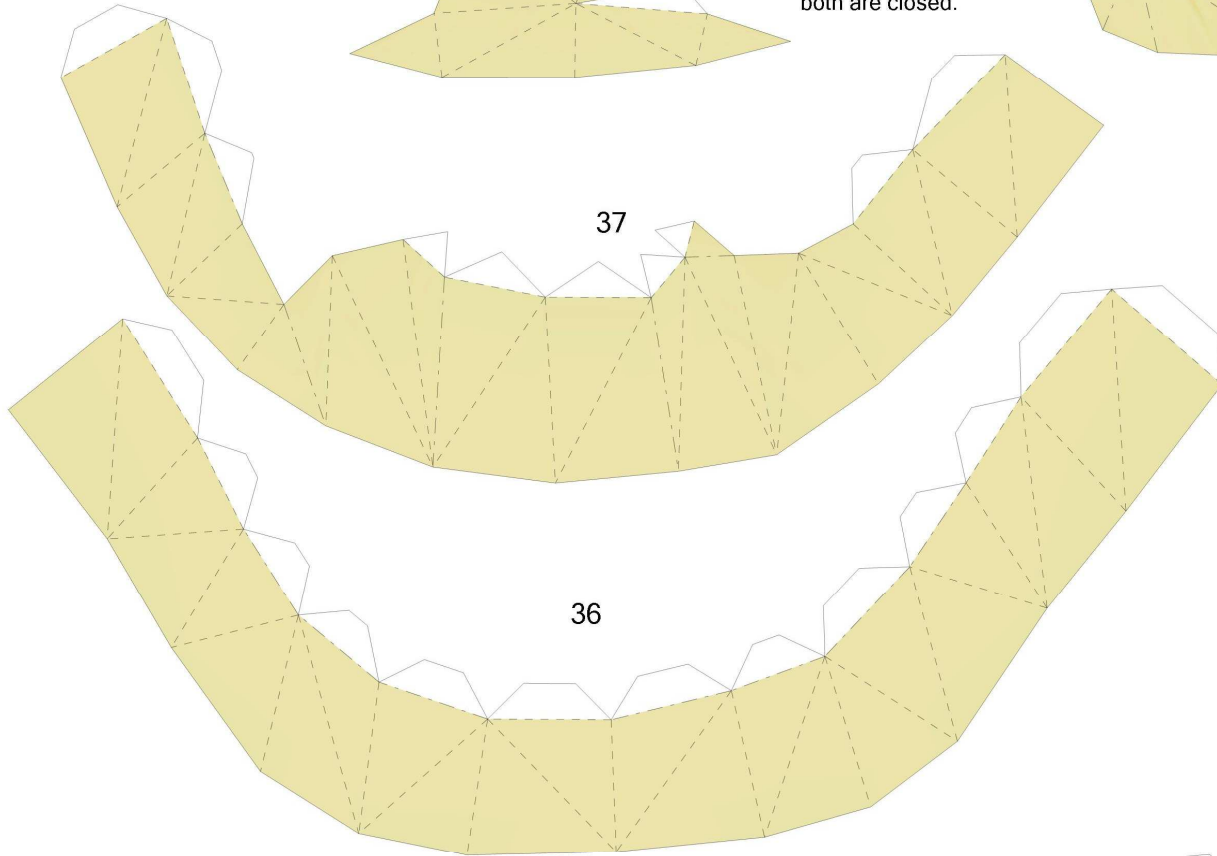
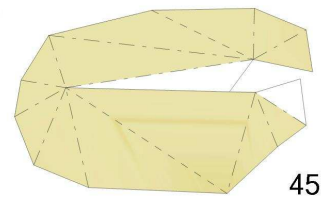
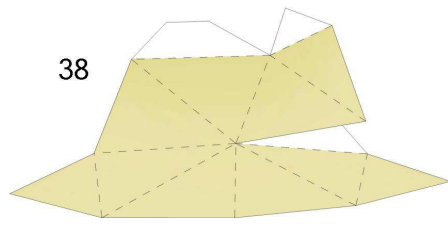
32



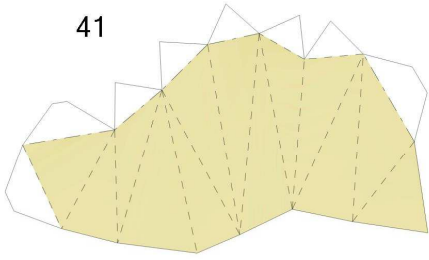
31

Start the tail at the tip.
Start at the side of the curl
with the tabs and build
around it. I suggest you
reinforce the connection
between the tail and the body.

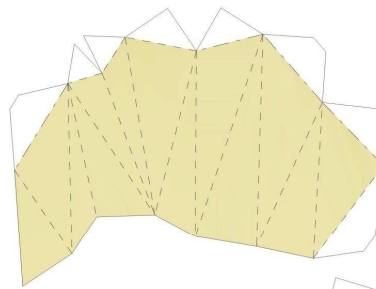
Close the body at the place
where it connects with the
head. Glue the head after
both are closed.



41

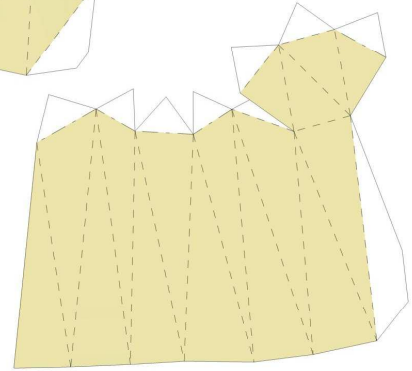


44

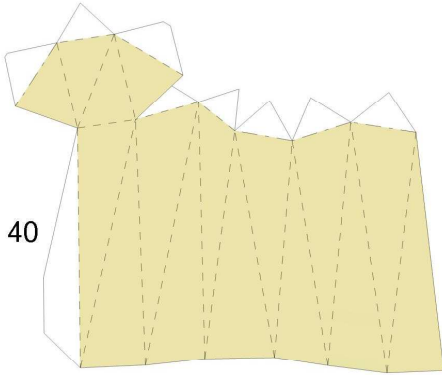


Start the arms at the
paws. You need to fold
the indicated lines to
give it a smooth shape.

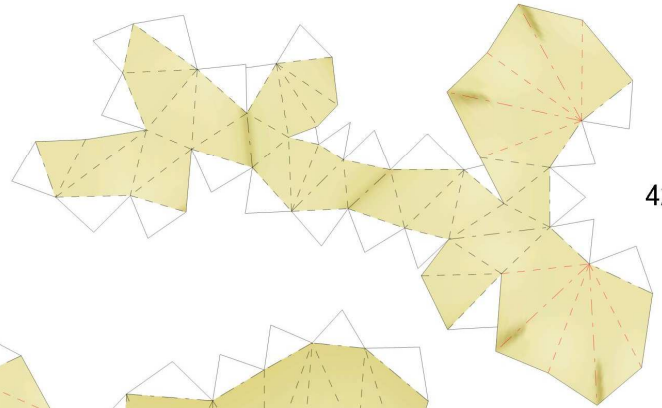
43



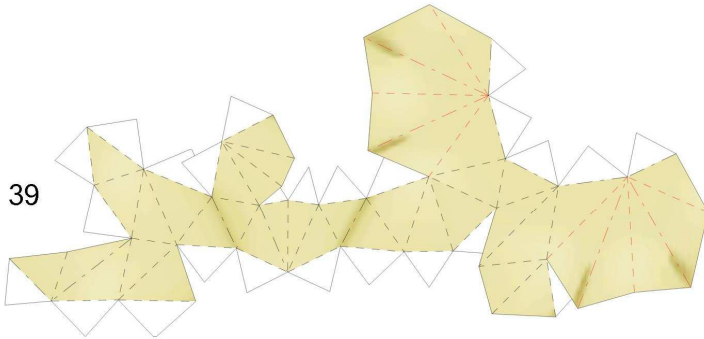
40



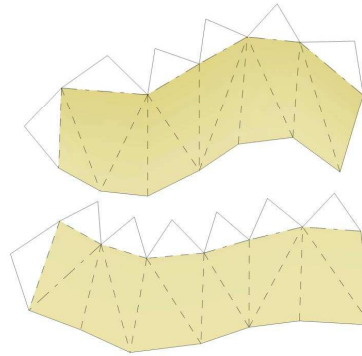
42



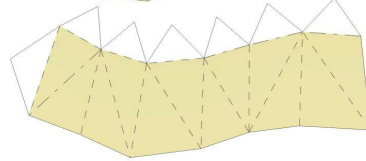
39



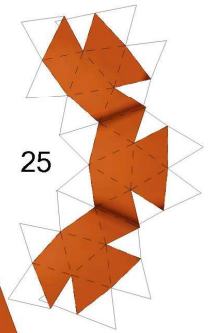
28



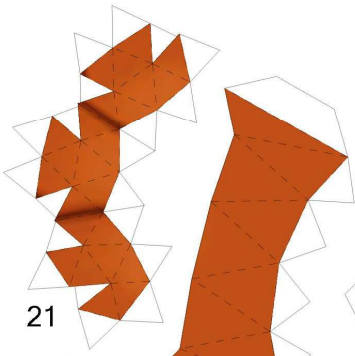
27



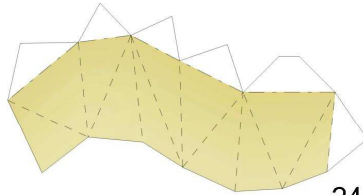
25



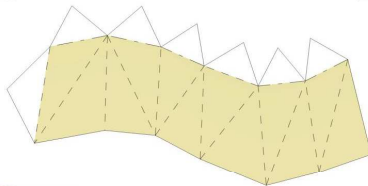
21



24

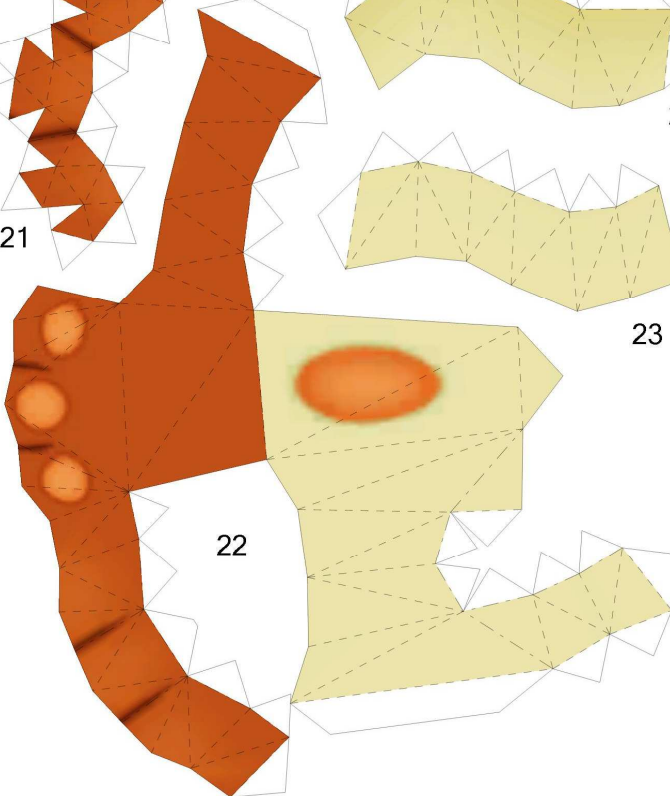


23



Start the body at the
toes and build it up.

22



26

