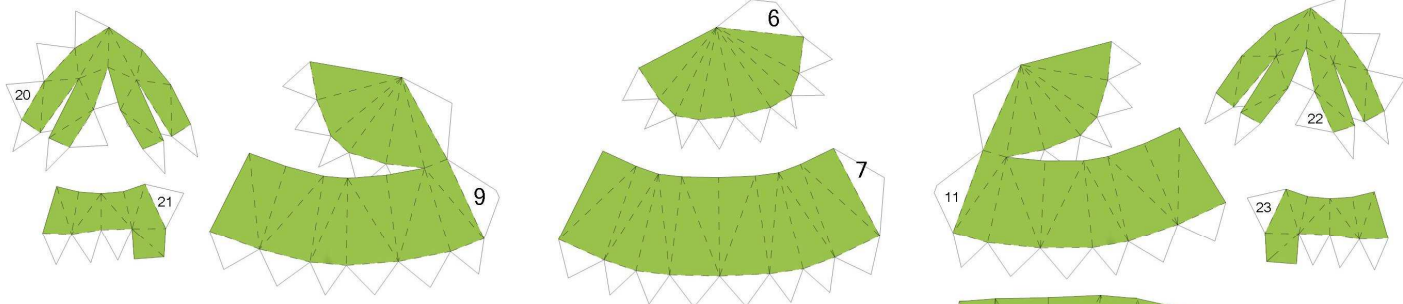




Chespin

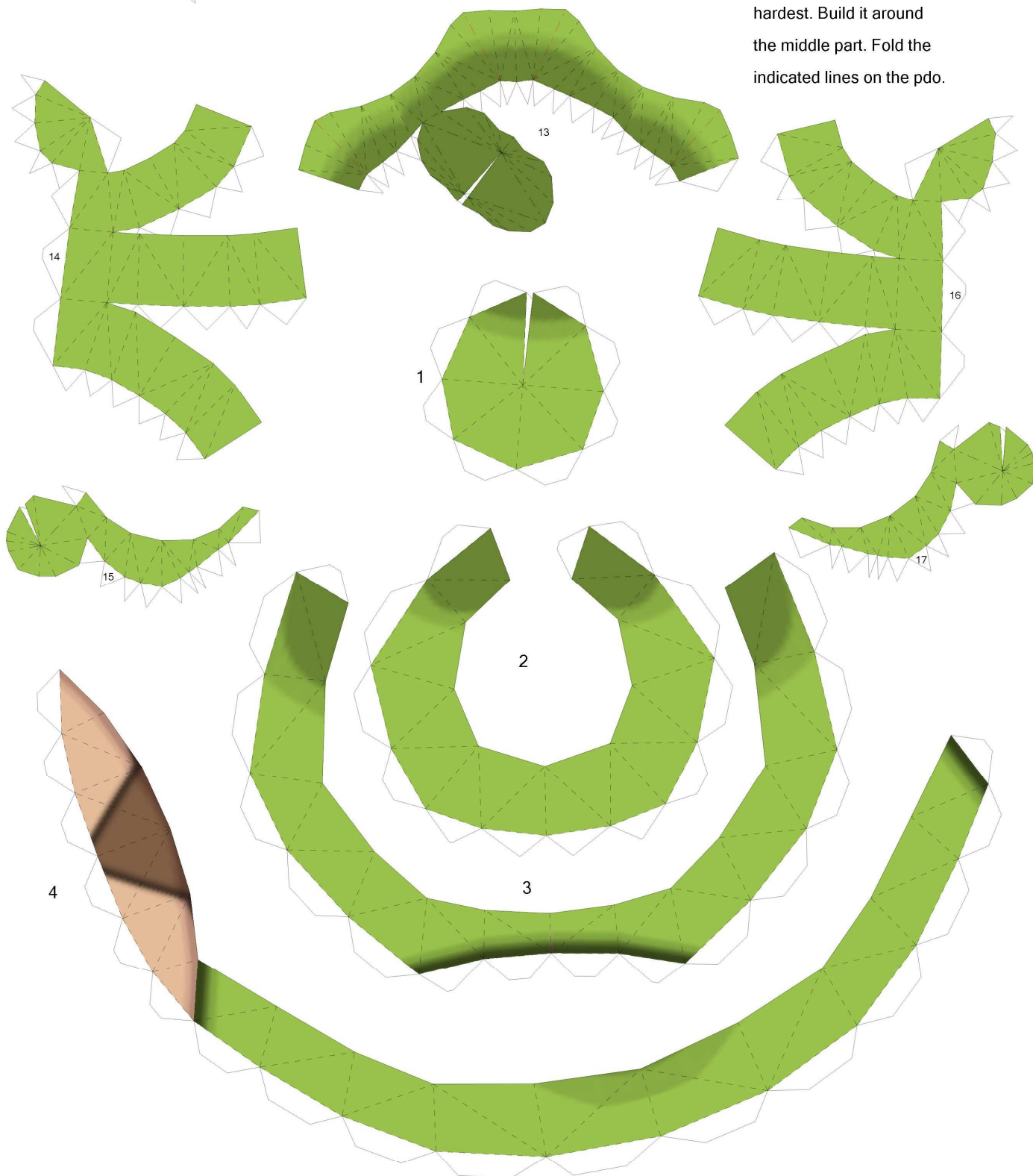
By LuIS

Paper Pokés
www.pokemonpapercraft.net



Glue the details to the head as you go, so you can apply pressure from the inside.

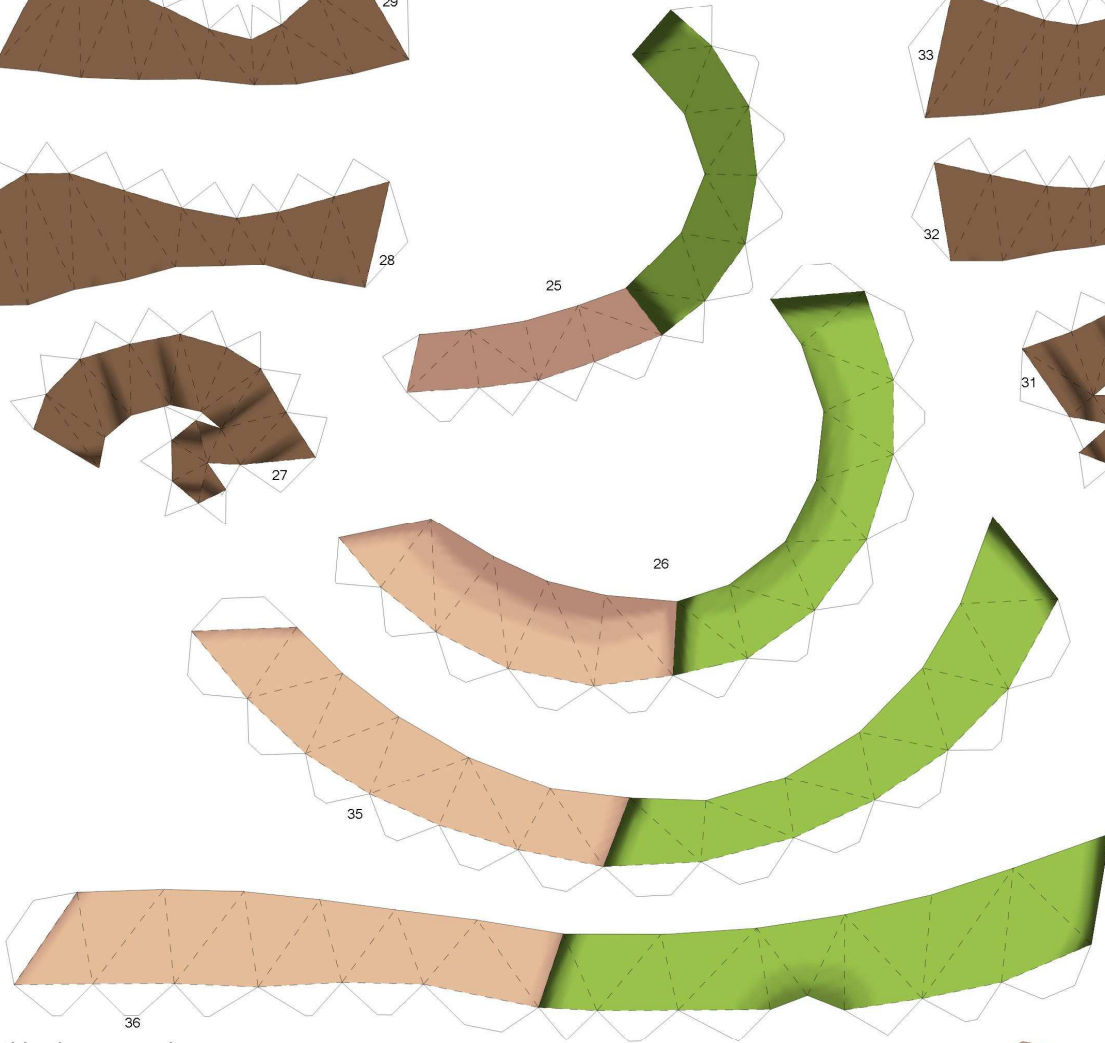
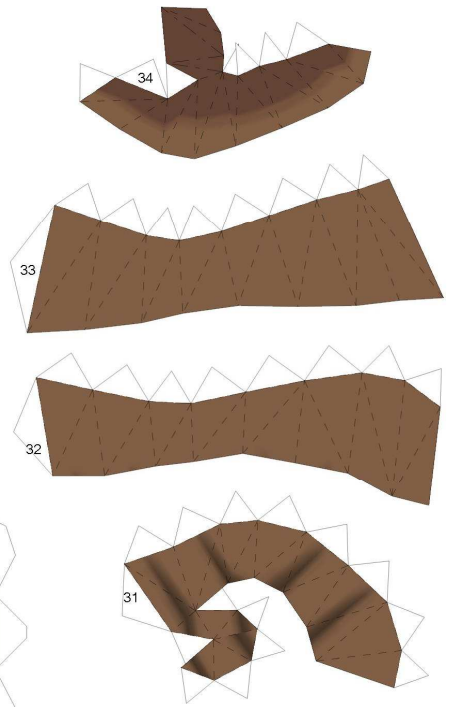
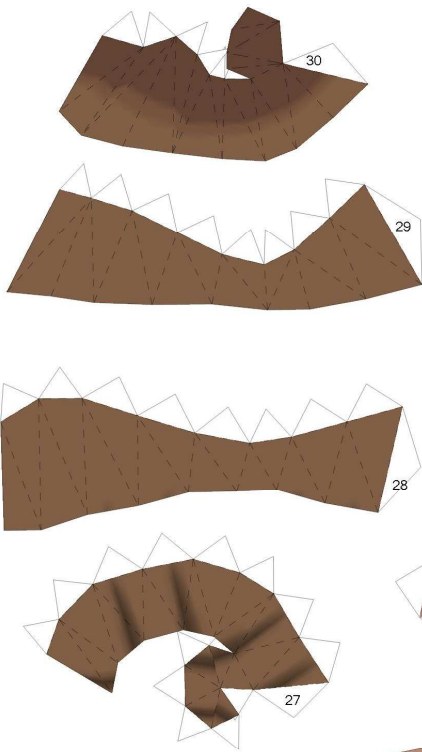
The bigger one is the hardest. Build it around the middle part. Fold the indicated lines on the pdo.



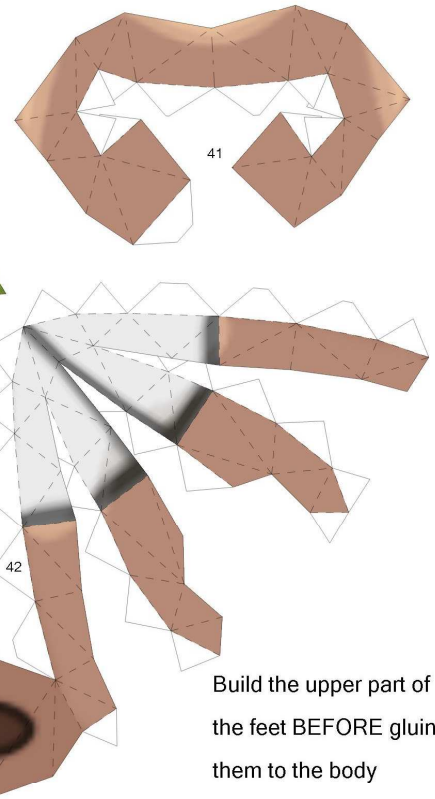
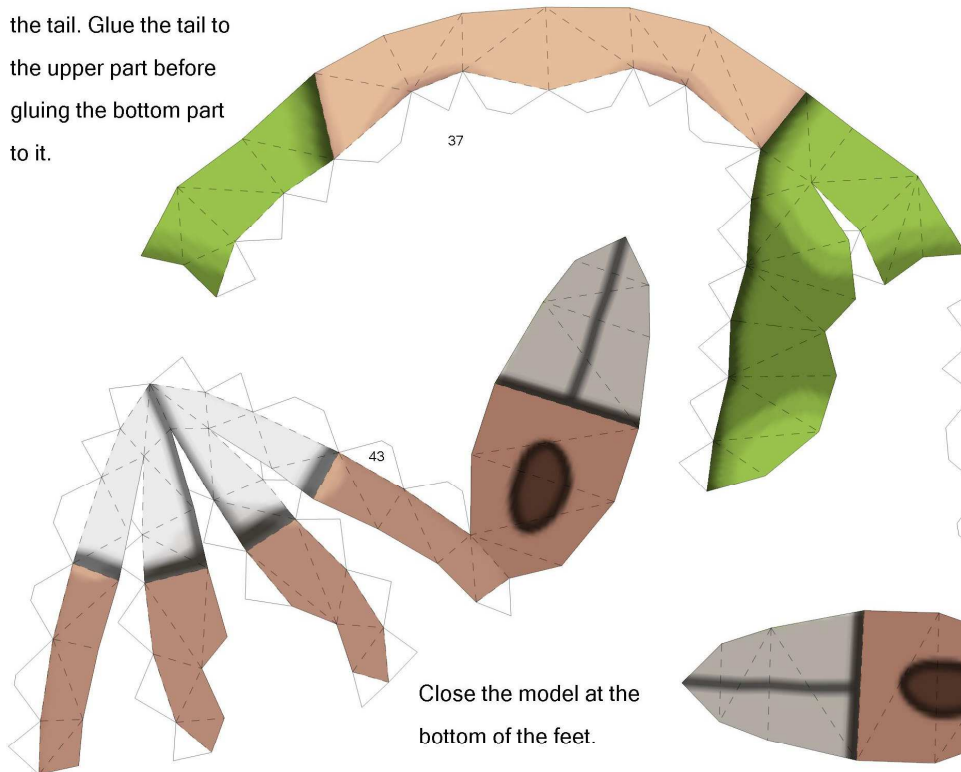
Curl the head and torso pieces with a pencil to give them a rounder shape.



Glue the arms to the body when the numbers get to them, while you can still apply pressure from the inside.



Build this piece around the tail. Glue the tail to the upper part before gluing the bottom part to it.



Close the model at the bottom of the feet.

Build the upper part of the feet BEFORE gluing them to the body and closing.